

# NEWS LETTER

TO EUROPEAN  
HEALTH LIBRARIANS

DES BIBLIOTHECAIRES EUROPEENS  
DE LA SANTE



**European Association for Health Information and Libraries**

**Association Européenne pour l'information et les Bibliothèques de santé**

OCTOBER 1990 • NUMBER 13

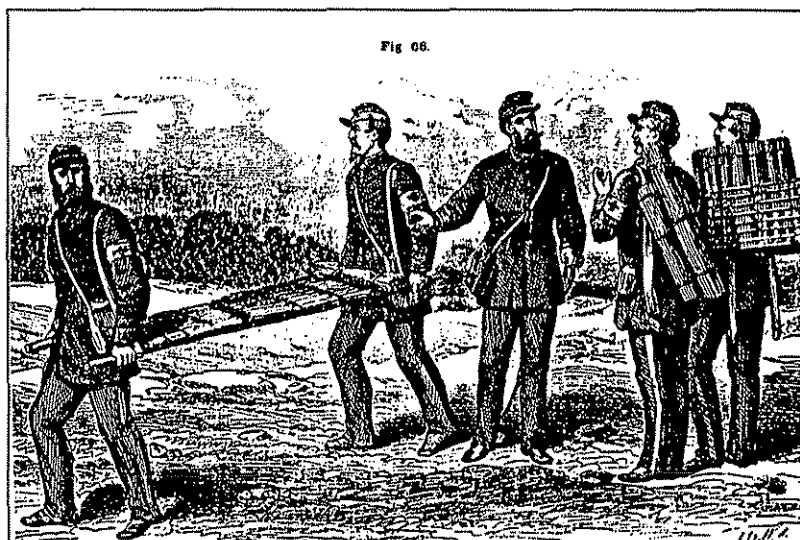
OCTOBRE 1990 • NUMERO 13

## CONTENTS

- Editorial ..... 3
- News from  
our Association ..... 5
- Invited article ..... 11
- News from Europe ..... 13
- Publications ..... 18
- Forthcoming Events ..... 20
- EAHL General  
Information ..... 23

## SOMMAIRE

- Editorial ..... 3
- Nouvelles de notre  
Association ..... 8
- Article choisi ..... 11
- Nouvelles d'Europe ..... 13
- Publications ..... 18
- Prochains événements ..... 20
- Informations générales ..... 23



*French army hospital corps before Paris equipped with straw mats*

The production of this Newsletter was made possible by the generous sponsorship of :

La publication de ce Bulletin a pu être réalisée grâce au généreux parrainage de :

- SWETS & ZEITLINGER bv
- SPRINGER VERLAG GmbH

60 RUE DE LA CONCORDE - B-1050 BRUSSELS/BRUXELLES - BELGIUM  
TEL : +32/2/511 80 63 - FAX : +32/2/512 32 65

**EUROPEAN ASSOCIATION  
FOR HEALTH INFORMATION  
AND LIBRARIES**

**ASSOCIATION EUROPEENNE  
POUR L'INFORMATION  
ET LES BIBLIOTHEQUES DE SANTE**

**Acting President:** Mrs Ursula HAUSEN  
Bibliothek  
Medizinische Hochschule Hannover  
Postfach 61 01 80  
D-3000 Hannover 61 (F.R. Germany)  
Tel.: +49/511/532 5578  
Fax: +49/511/532 5550

**Executive Secretary:** Mrs Brigitte BLUM  
Universitätsspital - Bibliothek  
Medical Faculty of Bern  
Inselspital  
CH-3010 Bern (Switzerland)  
Tel.: +41/31/64 31 54  
Fax: +41/31/26 36 43

**EAHIL secretariat:** Mrs R. Hoet, secretary  
60 rue de la Concorde  
B-1050 Brussels, Belgium  
Tel.: 2/511 80 63 - Fax : 2/512 32 65

The EAHIL logo consists of the caduceum, the symbol of the health professions for two millenia; the book, the symbol for all forms of media for information for five centuries; the 12 stars of the flag of Europe adopted since 1949 by the Council of Europe and other European institutions.



Le logo de l'AEIBS se compose du caducée, le symbole des professions de la santé depuis deux millénaires; du livre, le symbole des différentes formes de media de l'information depuis cinq siècles; les 12 étoiles du drapeau de l'Europe adopté depuis 1949 par le Conseil de l'Europe et d'autres institutions européennes.

## Urology Journals from Springer-Verlag

### **International Urogynecology Journal**

1990, Volume 1 (4 issues): £80.00 plus carriage charges  
1991, Volume 2 (4 issues): £88.00 plus carriage charges

### **Der Urologe A**

*Zeitschrift für klinische und praktische Urologie*

1990, Volume 29 (6 issues): DM 328,- plus carriage charges  
1991, Volume 30 (6 issues): DM 368,- plus carriage charges

### **Der Urologe B**

*Organ des Berufsverbandes der Deutschen Urologen*

1990, Volume 30 (6 issues): DM 348,- plus carriage charges  
1991, Volume 31 (6 issues): DM 368,- plus carriage charges

### **Urologic Radiology**

*A Journal of Diagnostic Imaging and Interventional Uroradiology*

1990, Volume 12 (4 issues): DM 215,- plus carriage charges  
1991, Volume 13 (4 issues): US \$115,00 plus carriage charges

### **Urological Research**

*A Journal of Clinical and Laboratory Investigation*

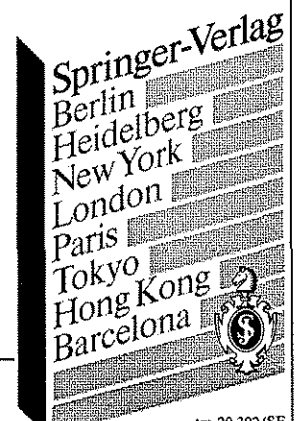
1990, Volume 18 (6 issues): DM 428,- plus carriage charges  
1991, Volume 19 (6 issues): DM 454,- plus carriage charges

### **World Journal of Urology**

*Official Journal of the Urological Research Society*

1990, Volume 8 (4 issues): DM 158,- plus carriage charges  
1991, Volume 9 (4 issues): DM 188,- plus carriage charges

**Why not  
make them  
available  
to your audience!**



## EDITORIAL

### THE GOLDEN RULE

A Fulbright Scholarship in the U.S. during the winter of 1990 enabled me to observe the functioning and management of two medical libraries - very different in size. I have been asked to give a few impressions in this editorial.

First, the "Library for the Texas Medical Center" in Houston (Texas). This library serves a gigantic hospital complex "The Texas Medical Center". The "Methodist" is amongst its more famous hospitals. Most of the functions of this library are computerized, and ninety-six people are employed in it.

Then, the "Mid-Michigan Regional Medical Center" and its small library: the "Health Sciences Library", located in the north of Michigan in Midland. It belongs to the "Mid-Michigan Health Care Systems network" and cooperates with the other hospital libraries in that area (purchases, inter-library loans,...). A full time professional is busy within this institution helped by three part-time staff.

Finally I had the chance to visit our "parent establishment" - the National Library of Medicine in Bethesda (Maryland).

I possess a considerable amount of detailed information about these three institutions and can, eventually, communicate them to anyone interested. A longer article will be published later in the French professional press.

Concerning this American experience, it is perhaps superfluous to say that I was struck by the many differences between these American libraries and the one I am in charge of - the medical library of a teaching hospital in a Parisian suburb. I will pick out one of them, perhaps of secondary importance, but interesting for our profession and worthy of debate. Over there, most doctors, internists, residents or students in specialties belonging to a hospital or to a medical school own a key to the hospital library and can study there day and night or whenever they want. There are even unsupervised study rooms, with books and journals, on the different floors of the "Methodist" in Houston and anyone may use them. The librarian has her office downstairs and from time to time goes through the study rooms. She completely trusts the doctors.

In Paris and its suburbs, the opening hours of our teaching hospital libraries are often the following: from 9 a.m. till 6 p.m. or from 10 a.m. until 7 p.m., i.e. 9 hours a day, without closing during lunch-time. Often, however, the staff is reduced to one, two or three people. But when they have left, it is CLOSED!! No night access, no access on Saturday or Sunday. Leaving a key for the readers would often mean finding a mess on Monday morning, or

## EDITORIAL

### LA REGLE D'OR

Boursière Fulbright aux Etats-Unis en hiver 1990, j'ai pu observer le fonctionnement et la gestion de deux bibliothèques médicales de tailles très différentes dans ce pays. On me demande ici de livrer quelques impressions.

Tout d'abord, "The Library for the Texas Medical Center" à Houston (Texas). Cette bibliothèque dessert un gigantesque complexe hospitalier, le "Texas Medical Center". Parmi ses hôpitaux célèbres: le "Methodist". Informatisée pour la plupart de ses fonctions, cette Bibliothèque emploie 96 personnes.

Ensuite, le "Mid-Michigan Regional Medical Center", et sa petite Bibliothèque la "Health Sciences Library", situés au Nord du Michigan, à Midland. Appartenant au réseau du "Mid-Michigan Health Care Systems", cette Bibliothèque collabore pour les achats, le prêt-interbibliothèques, etc. avec les autres bibliothèques de la région. Elle emploie une personne à temps plein et trois autres à temps partiel.

J'ai eu la chance, enfin, de visiter notre maison-mère", la National Library of Medicine, à Bethesda (Maryland).

Pour ces trois établissements, je détiens de nombreuses informations détaillées et peux éventuellement les communiquer à toute personne intéressée. Un article, plus long, paraîtra dans la presse professionnelle française.

En ce qui concerne cette expérience américaine, il est inutile de préciser que de nombreuses différences m'ont frappée entre les bibliothèques américaines et celle dont je suis responsable: Bibliothèque de C.H.U., de la banlieue parisienne. Je vous livre ici l'une d'elles, peut-être secondaire, mais intéressante pour la profession, et sujette à débats. Là-bas, la plupart des médecins, internes ou étudiants en cours de spécialité appartenant à un hôpital et à l'Ecole de Médecine s'y rattachant, possèdent la clé de la Bibliothèque et viennent y étudier jour et nuit ou quand bon leur semble. Il existe même des salles de lecture non surveillées (contenant livres et journaux) dans les différents étages du "Methodist" à Houston et chacun peut y accéder. La bibliothécaire possède un bureau au rez-de-chaussée et passe de temps en temps dans ces salles. Elle fait entièrement confiance aux médecins qui la fréquentent.

A Paris et dans la région parisienne, nos bibliothèques de C.H.U. ont souvent les horaires suivants: 9:00-18:00 ou 10:00-19:00, soit 9 heures d'ouverture par jour, sans interruption pendant l'heure du déjeuner. Et, en général, après le départ du bibliothécaire, fermeture!!! Pas d'accès la nuit, ni les samedis, ni les dimanches. Nous aurions bien trop peur de la pagaille retrouvée le lundi matin ou

discovering "abusive" borrowing! But are we an exception - in France - in Europe? Perhaps we should train our readers to respect public property. But this starts at an early age and, anyway, French readers are far less disciplined than their Anglo-Saxon colleagues. In my opinion to give readers a key would mean "running towards a sure disaster". And you, dear European librarian, what's your opinion? To leave or not to leave the key, "that is the question".

If solutions may spring from the meeting of different ideas, one must nevertheless admit, in the words of this spiritual Irish man, G.B. Shaw (whom our dear editor will not deny!), that, in this field, anyway "the golden rule is that there are no golden rules."

**Francoise Alptuna,**  
Librarian in charge of the Library of the C.H.U.,  
Hospital A. Beclere, CLAMART (92), France

des emprunts "abusifs". Mais sommes-nous une exception en France, en Europe? Peut-être faudrait-il former nos lecteurs au respect de la chose publique? Mais ceci commence en bas âge, et de toutes façons, les lecteurs français sont beaucoup moins disciplinés que leurs collègues anglo-saxons. Leur laisser une clé me semblerait courir vers un désastre certain. Et vous, cher(e) bibliothécaire européen, qu'en pensez-vous? laisser ou ne pas laisser la clé, that is the question.

Si la solution peut jaillir du confrontation d'idées différentes, il faudra, je crois, admettre, avec ce spirituel irlandais G.B. Shaw (que notre chère Rédactrice-en-chef ne pourra renier!) que, de toutes façons, dans ce domaine "la règle d'or, c'est qu'il n'y a pas de règle d'or".

**Françoise Alptuna**  
Responsable de la Bibliothèque du C.H.U.  
Hôpital A. Bécère/Clamart (92), France

## EDITORIAL NOTE

The picture on the cover is from: *The Surgeon's Handbook on the Treatment of Wounded in War*, by Dr Friedrich Esmarch, Professor of Surgery at the University of Kiel.

This English translation was published in London in 1878 and a copy is held in the Leicester Medical Society's Historical Collection.

I hope this picture is sufficiently European, if on a rather gloomy subject. If anyone has any suitable pictures (either your own copyright or out of copyright), please would you send me a copy.

We want to brighten up the Newsletter a little. It must fit into the space on the front cover!

## NOTE DE LA REDACTRICE - EN - CHEF

*La gravure en page de couverture est extraite de: "The Surgeon's Handbook on the Treatment of Wounded in War" par le Dr Friedrich Esmarch, Professeur en Chirurgie à l'Université de Kiel.*

*La traduction anglaise a été éditée à Londres en 1878 et est disponible à la "Leicester Medical Society's Historical Collection".*

*Je pense que cette illustration est suffisamment européenne. Je serais heureuse de recevoir toutes suggestions de gravures ou illustrations dans le domaine de la santé qui pourraient mettre en valeur notre Bulletin d'Information.*

*La dimension de l'espace libre de la page de couverture doit être respectée.*

# NEWS FROM OUR ASSOCIATION

## ANNOUNCEMENT OF ELECTION RESULTS

The ballot papers received before the July 31 deadline have been counted under the direction of the Bailiff, Maître Dansard.

Here are the results of the EAHIL elections :

*PRESIDENT for 1991-1992 :*

Monique CLELAND

Bibliothèque de la Faculté de Médecine, CHUV-BDFM, BH 08, 46 rue du Bugnon, CH-1011 Lausanne, Switzerland, Tel.+41/21/314 43 83, Fax: +41/21/314 31 81

*New members of the EXECUTIVE BOARD for 1991-1994:*

Fiona M. PICKEN

North West Thames, Regional Library and Information Service, c/o Westminster, Site Library, Charing Cross & Westminster Medical School, 17 Horseferry, Road, London SW1P 2AR, UK, tel. +44/71/630 1574, Fax: +44/71/703 5750

Elisabeth HUSEM

University of Oslo, Institute of Psychiatry, Library, P.O.Box 85, Vinderen, N-0319 Oslo 3, Norway - Tel.: +47/2/14 65 90 - Fax: +47/2/49 58 61

Pascale DELAUSNAY \*

Rhône-Poulenc Pharma Belgique, Départ. Médical et Scientifique, 128 avenue Carton de Wiart, B-1090 Bruxelles, Tel.+32/2/423 4622 - Fax:+32/2/424 0147

*\* Monique Cleland being elected President, her seat on the Board becomes vacant. Pascale Delausnay, as first non elected candidate, will fill this vacant seat and join the Board as the third elected Board Member.*

The election results are as follows:

Valid votes received: 211

Invalid votes: 19

For President for the years 1991-1992:

Monique CLELAND	142 votes
Suzanne BAKKER	57 votes

For the Executive Board, for the years 1991-1994:

Fiona PICKEN, UK	97 votes
Elisabeth HUSEM, Norway	74 votes
Pascale DELAUSNAY, Belgium	61 votes
F. RIBES COT, Spain	46 votes
Beatrice DORAN, Ireland	40 votes
Deonilla PIZZI, Italy	33 votes

From January 1991 the Members of the Executive Board will be:

Monique Cleland, President - Ursula Hausen, Past President - Brigitte Blum, Pascale Delausnay, Jeanet Ginestet, Elisabeth Husem, Fiona Picken

### EAHIL COUNCIL

The complete list of National delegates on the Council for 1991-1992 is as follows:

### NATIONAL DELEGATES:

Claude DARIS, Centre Gestion Bibliothèques, C.P. 180, Université Libre de Bruxelles, avenue Franklin Roosevelt, 21, B-1050 BRUSSELS (BELGIUM), Tel.: +32/2/642 23 88, Fax: +32/2/640 80 22

Muriel CARCANO, SMITH KLINE BEECHAM, Bibliothèque, B-1320 GENVAL (BELGIUM), Tel.: +32/2/656 20 37, Fax : +32/2/656 20 99

Alice NORHEDE, Medical Library, Kas Herlev, Herlev Ringvej, DK-2730 HERLEV, (DENMARK), Tel.: +45/44/53 53 00, Fax : +45/44/53 53 30

Eva KIHMBERG, Dental Library, University of Helsinki, Mannerheimintie 172, SF-00280 HELSINKI (FINLAND) Tel.: 358/0/47 35 324, Fax : 358/0/414 272

Pierre Marie BELBENOIT-AVICH, Bibliothèque Interuniversitaire, de Lyon - Section Santé, 8 avenue Rockefeller, F-69373 LYON CEDEX 08, (FRANCE) Tel.: +33/7/874 19 74

Jean Pierre BERNAT, SANOFI RECHERCHE, 371 rue du Pr. J. Blayac, F-34082 MONTPELLIER (FRANCE) F-59045 LILLE (FRANCE), Tel. : +33/67 40 01 33

Dipl.Ing. Rüdiger SCHEEMANN, Technische Universität Berlin, Institut für Krankenhausbau Dokumentation Krankenhauswesen, Strasse des 17.Juni, 135, D-1000 BERLIN 12 (W. GERMANY), Tel: +49/30/314 23 905

Litsa LAPPAL, Medical Library, General Peripheral Hospital Kat, 2 Nikis Street, 14561 KIFISSIA (GREECE), Tel/ 801 1516

Vilma ALBERANI, Editorial Service, Istituto Superiore di Sanita, Viale Regina Elena 299, I-00161 ROMA (ITALY), Tel.: +39/6/4990 (ext. 253) ,Fax : +39/6/40 40 236

Leslie LOCCHIE, Biblioteca Centralizzata, U S L 28, via Albertoni 15, I-40138 BOLOGNA (ITALY), Tel.: +39/51/63 61 277 (or 6361111), Fax : +39/51/63 61 202

Laura CAVAZZA, Soprintendenza Beni Librari, e Documentari della Regione, Emilia-Romagna, via Farini, 28, I-40124 BOLOGNA (ITALY), Tel.: +39/51/22 6610, Fax: +39/51/23 4170

A. Th. HOGENAAR, Library - The Royal Netherlands, Academy of Sciences & Arts, Joan Muyskenweg 25, NL-1096 CJ AMSTERDAM, THE NETHERLANDS, Tel.: +31/20/668 50 79

Ragnild LANDE, University of Trondheim, Medical Library, Regional Hospital, N-7006 TRONDHEIM (NORWAY), Tel.: +47/7/59 84 89, Fax: +47/7/59 79 64

Turid THARALDSEN, Norwegian Library Association, Medical Section, Statens Institutt for Folkehelse, Teitmyrsvn, 75, N-0462 OSLO 4 (NORWAY), Tel.: +47/2/35 60 20, Fax : +47/2/35 36 05

A. BRISOIRE de BELMONTE, Biblioteca, Facul.de Medicina, Universidad de Alicante, San Vicente del Raspeig, E-ALICANTE (SPAIN), Tel.: +34/65/565 85 48 Fax : +34/65/565 85 14

Maria Manuela CAETANO, Faculdade de Ciencias Med. U. N. L., Campo de Santana 130, P-1198 LISBOA (PORTUGAL)

Jordi SERRANOMUNOZ, Bibliotecario Fundacion Ina-Puigvert, c/Cartagena, 340-350, E-08025 BARCELONA (SPAIN), Tel.: +34/93/235 0300, Fax: +34/93/255 9338

Ingrid EDBERG, Umea Universitetsbibliotek, Vard-biblioteket/Medical Library, Regionsjukhuset i Umea, S-901 85 UMEA (SWEDEN), Tel.: +46/90/10 26 61, Fax : +46/90/16 66 78

Muriel SERODINO, Centre Médical Universitaire, Bibliothèque de la Fac.de Médecine, 9, avenue de Champel CH-1211 GENEVE (SWITZERLAND), Tel.: +41/22/22 92 65, Fax : +41/22/47 33 34

Rosmarie SCHENK, CIBA-GEIGY AG, Pharma-Library, K 125.1308, CH-4002 BASEL (SWITZERLAND), Tel.: +41/61/696 21 56, Fax : +41/61/696 68 04

Lindsay CURTIS, Royal Postgraduate Medical School, Hammersmith Hospital, Ducane Road, LONDON W12 ONN (ENGLAND), Tel.: +44/71/740 32 46

Susan GOVE, St George's Hospital - Library, Medical School, University of London, Hunter Wing - Cranmer Terrace, LONDON SW17 ORE (ENGLAND), Tel. : +41/81/672 9944 -(xt.56063)

Tony McSEAN, British Medical Association, Library, BMA House, Tavistock Sq., LONDON WC1H 9JP (ENGLAND), Tel.: +44/71/383 6036, Fax : +44/71/388 2544

Stefan ADAMIC, Insitute for Biomedical Informatics, Medical Faculty, Vrazov Trg. 2, 61105 LJUBLJANA (YUGOSLAVIA), Tel.: 061/313 233 (ext.3861)

The newly elected will take office on January 1, 1991.

**Jean Claude Smeets**  
Chairman of the Nominating Committee

*We wish to warmly thank all candidates for their willingness to stand for office. We also thank Jean Claude Smeets, Chairman of the Nominating Committee, and its members for the work well done.*



**FIRST AMENDMENT TO EAHIL STATUTES**

On the proposed Amendment to Statutes (Art. 8, paragraph 1) 156 affirmative replies (of 161 answers) were received. These constitute more than 25% of the total ballots mailed (429 total mailed). The amendment will become effective on 1st January 1991 (Rules of Procedures, art. 5).

Pascale Delausnay, Belgium, becomes a new elected Board Member to fill the post vacated by Monique Cleland. Therefore, it is unnecessary to apply this first newly adopted Amendment to the Statutes at this time and following the present elections.



**56TH IFLA GENERAL CONFERENCE, STOCKHOLM, SWEDEN - INFORMAL EAHIL MEETING**

The 56th IFLA General Conference in Stockholm was the occasion for an informal Meeting of participants interested in the activities of EAHIL. The Meeting scheduled on Wednesday the 22 of August was preceded by a brief announcement on Monday. 17 people were present on Monday, among whom 7 came back on Wednesday, and a total of 17 persons were also present on the Wednesday. The Meeting was brought to order by Ursula Hausen. The main topics of this gathering included an update on progress made with the Directory and the programme of continuing education. The Meeting focused on the question of representation of EAHIL as an NGO (non governmental organisation). Ursula Hausen underlined the advantages and the role which EAHIL could play if such representation was achieved. An intervention from G. Pentelow also indicated how important it is for EAHIL to take a proactive attitude in organisations such as the Council of Europe and what an important role EAHIL could play in the promotion of information in all areas of health care. Ursula Hausen spoke briefly on the proposal of a European union catalogue of medical books, which could be brought forward to the Commission of European Communities.

A member of the Ministry of Health of Czechoslovakia, Hana Pessrova, called our attention to how an organisation such as EAHIL could help countries of Eastern Europe. In her case, she mentioned the project in Czechoslovakia for a central medical library. The Meeting adjourned at 10 a.m.



## EASTERN EUROPEAN STATES BECAME MEMBERS OF THE COUNCIL OF EUROPE

Hungary, Czechoslovakia and Poland have become member states of the Council of Europe, Council on Cultural Cooperation. This ends associate membership in EAHIL for our colleagues from these countries. The EAHIL Executive Board accepts and welcomes the 8 members from these three Eastern European countries as Full Members of the Association.



## EAHIL MEMBERSHIP

We welcome a new EAHIL AFFILIATED MEMBER : OVP - Editions du Vidal, 11 rue Quentin Bauchart, 75384 Paris. Mr Jean-Louis Michel represented OVP-Editions du Vidal at the Exhibition of our Workshop on Human Issues in Library Automation (WHILA) on May 7-8, 1990. We appreciate and thank OVP for its support and cooperation.

We also extend a warm welcome to the following new EAHIL MEMBERS:

College of Veterinary Medicine, Armi Setälä, Helsinki, Finland; Caroline DAMOUR, CEDR (Centre d'Etude et de Recherche), Paris; Yvonne GRANDBOIS, WHO, Geneva; Mechthild HOFMANN, Germany, Institut Pasteur de Lille, Geneviève Brochard, Lille, France and the Medical Library Utrecht, Gertie Veldman, Utrecht, The Netherlands.



## EAHIL PROMOTIONAL LEAFLET

A leaflet is now available from Brussels, which gives information about EAHIL, including its aims and objec-

tives, membership, programme, organisation and history. If you would like copies in order to promote the Association, for example at professional meetings, or to include with other correspondence you send out, please ask the EAHIL Secretariat, stating how many copies you would like. Remember that this is an important way in which you can help. The best advertisement for our Association is its satisfied members.



## WHILA - PAPERS

Tony McSEAN, British Medical Association, forwarded to us the paper titled: "Is CD-ROM a Transient Technology?" by Tony McSean and Derek Law. Tony McSean gave this lecture at our Workshop on Human Issues in Library Automation held on May 7-8, 1990. It can be obtained as can the other available papers, from the EAHIL secretariat, upon request.



## UPDATED ADDRESSES OF BOARD AND COUNCIL MEMBERS

Ursula HAUSEN: new fax nr.: +49/511/532 3346 (532.5550: alternate in case of need only)

Françoise ALPTUNA, member of the Editorial Board: New address: Bibliothèque Interuniversitaire de Médecine, 12, rue de l'Ecole de Médecine, F-75270 Paris Cedex 06, France - Tel. 33/1/40 46 19 53

Vanna PISTOTTI, Italian Council Member: Tel.: +39/2/3901 4353

*(EAHIL members who want to announce any changes, should advise the EAHIL secretariat for inclusion in the Newsletter).*

# THIRD EUROPEAN CONFERENCE OF MEDICAL LIBRARIES

preceded by continuing education courses

**24 - 26 September 1992**

## TROISIEME CONFERENCE EUROPEENNE DES BIBLIOTHEQUES MEDICALES

*précédée de cours de formation continue*

**24 - 26 septembre 1992**

**MONTPELLIER, FRANCE**



## NOUVELLES DE NOTRE ASSOCIATION

### RESULTATS DES ELECTIONS 1990 DE L'EAHIL/AEIBS

Les bulletins de vote reçus avant la date limite du 31 juillet 1990, ont été dépouillés sous le contrôle de Maître Dansard, Huissier de Justice.

Les résultats sont les suivants:

*PRESIDENTE (1991-1992):*

Monique CLELAND

Bibliothèque de la Faculté de Médecine, CHUV-BDFM, BH 08, 46 rue du Bugnon, CH-1011 Lausanne, Switzerland, Tel. +41/21/3144383, Fax: +41/21/314 31 81

*LE BUREAU EXECUTIF: nouveaux membres élus (1991-1994):*

Fiona M. PICKEN

North West Thames, Regional Library and Information Service, c/o Westminster Site Library, Charing Cross & Westminster Medical School, 17 Horseferry Road, London SW1P2AR, GB, Tel. +44/71/630 1574, Fax: +44/71/703 5750

Elisabeth HUSEM

University of Oslo, Institute of Psychiatry, Library, P.O.Box 85, Vinderen, N-0319 Oslo 3, Norvège, Tel. +47/2/14 65 90 - Fax: +47/2/49 58 61

Pascale DELAUSNAY \*

Rhône-Poulenc Pharma Belgique, Départ. Médical et Scientifique, 128 avenue Carton de Wiart, B-1090 Bruxelles, Tel. +312/2/423 4622, Fax: +32/2/424 0147

*\* Monique Cleland élue Présidente, son siège au sein du Bureau Exécutif devient vacant et sera pourvu par Pascale Delausnay, première candidate non élue au Bureau Exécutif.*

Les votes se présentent comme suit:

Bulletins de vote valides: 211 non valides: 19

Nombre de voix pour l'élection de la Présidente:

Monique CLELAND	142 votes
Suzanne BAKKER	52 votes

Nombre de voix pour l'élection de membres du Bureau Exécutif:

Fiona M. PICKEN, GB	97 votes
Elisabeth HUSEM, Norvège	74 votes
Pascale DELAUSNAY, Belgique	61 votes
F. RIBES COT, Espagne	46 votes
Beatrice DORAN, Irlande	40 votes
Deonilla PIZZI, Italie	33 votes

En conséquence, à partir du 1er janvier 1991, les membres du Bureau Exécutif de l'EAHIL/AEIBS seront les suivants:

Monique Cleland, Présidente - Ursula Hausen, Présidente sortante - Brigitte Blum, Pascale Delausnay, Jeanet Ginestet, Elisabeth Husem, Fiona Picken

### LE CONSEIL DE L'EAHIL/AEIBS

Vous trouverez en pages 5 et 6 la liste complète des délégués nationaux au sein du Conseil de l'AEIBS pour les années 1991-1992.

Le mandat de tous les candidats élus prendra cours au 1er janvier 1991.

Jean-Claude SMEETS

Président du Nominating Committee



*Nous souhaitons remercier chaleureusement tous les candidats qui ont participé activement aux élections 1990 et ont accepté de présenter leur candidature à un poste de responsabilité au sein de notre Association. Nous remercions également le Nominating Committee, son Président, Jean Claude Smeets, et ses membres pour le travail accompli au cours de ces derniers mois afin de mener à bien ces élections.*



### PREMIERE MODIFICATION AUX STATUTS DE L'EAHIL/AEIBS

A la modification à apporter aux statuts (Art. 8, Par. 1), 156 réponses positives (sur 161 réponses reçues) ont été enregistrées. Ce résultat représente plus de 25 % des bulletins totaux distribués (429 envois). Cette modification deviendra donc effective au 1er janvier 1991 (Rules of Procedures, Art. 5). Pascale Delausnay, Belgique, devient un membre élu du Bureau Exécutif afin de pourvoir au siège vacant laissé par Monique Cleland. En conséquence, il ne sera pas requis pour cette nouvelle période de mandats d'appliquer cette modification adoptée et apportée aux statuts de l'EAHIL/AEIBS.



### 56<sup>EME</sup> CONFERENCE GENERALE DE L'IFLA, STOCKHOLM, SUEDE - REUNION INFORMELLE DE L'EAHIL/AEIBS.

La 56<sup>eme</sup> Conférence Générale de l'IFLA donna à l'EAHIL/AEIBS l'occasion d'organiser une réunion informelle pour tous les participants intéressés à ses activités. Cette réunion prévue le mercredi 22 août fut brièvement



annoncée le lundi 20 où 17 participants étaient présents. 7 d'entre eux rejoignirent la réunion du mercredi. Au total, 17 collègues y participèrent. L'ordre du jour fut amené par Ursula Hausen. Les principaux sujets de cette réunion comprenaient l'avancement dans la réalisation du Répertoire des bibliothèques médicales de l'EAHIL/AEIBS et le programme des cours de formation continue. La question de la représentation de l'EAHIL/AEIBS comme organisation non gouvernementale fut soulevée. Ursula Hausen souligna les avantages et le rôle que notre Association devrait jouer si une telle représentation se réalisait. L'intervention de G. Pentelow mit en évidence l'importance du rôle que pourrait jouer l'EAHIL/AEIBS au sein d'organisations telles que le Conseil de l'Europe et l'information et la promotion qu'elle pourrait apporter dans tous les domaines des soins de santé. Ursula Hausen exposa brièvement la proposition d'un Catalogue Collectif Européen de livres médicaux qui pourrait être soumis auprès de la Commission des Communautés Européennes. Un membre du Ministère de la Santé tchécoslovaque, Hana Pessrova, attira l'attention sur le fait qu'une organisation telle que l'EAHIL/AEIBS pouvait aider les pays de l'Europe de l'Est. En ce qui la concerne, elle mentionna le projet d'une bibliothèque médicale centrale en Tchécoslovaquie. La réunion se clôtura à 10 heures.



#### **DES PAYS DE L'EST DEVENUS ETATS MEMBRES DU CONSEIL DE L'EUROPE**

La Hongrie, la Tchécoslovaquie et la Pologne sont devenues des états membres du Conseil de l'Europe, Conseil de la Coopération Culturelle. Ceci met fin au statut de membres associés de notre Association pour nos collègues en provenance de ces pays. Le Bureau Exécutif accepte et souhaite la bienvenue aux 8 membres de l'EAHIL/AEIBS de ces trois pays de l'Est qui deviennent membres de plein droit de notre Association.



#### **ADHESIONS • NOUVEAUX MEMBRES**

L'Association souhaite la bienvenue aux nouveaux membres de l'association :

Un **MEMBRE AFFILIE** : **O V P** - Editions du Vidal, 11 rue Quentin Bauchart, F-75384 Paris. Mr Jean-Louis Michel représenta OVP-Editions du Vidal à l'Exposition de nouveaux produits qui s'est tenue lors de notre Séminaire sur l'Aspect Humain dans l'Automatisation des Bibliothèques (WHILA), les 7-8 mai 1990 à Bruxelles. Nous remercions Mr Jean Louis Michel et OVP pour son soutien et sa coopération;

#### **DES MEMBRES DE PLEIN DROIT :**

**College of Veterinary Medicine, Armi Setälä, Helsinki, Finland;** **Caroline DAMOUR, CEDR (Centre d'Etude et de Recherche), Paris;** **Yvonne GRANDBOIS, WHO,**

**Genève, Suisse;** **Mechthild HOFMANN, Allemagne de l'Est, Institut Pasteur de Lille, Geneviève Brochard, Lille, France et la Medical Library Utrecht, Gertie Veldman, Utrecht, The Netherlands.**



#### **DEPLIANT D'INFORMATION SUR L'EAHIL/AEIBS**

Un dépliant d'information générale sur l'EAHIL/AEIBS (but et objectifs, adhésions, programme, organisation et histoire) vient d'être publié afin de permettre à tous nos membres d'en faire usage dans un but de promotion et d'information, de le distribuer auprès d'autres collègues de bibliothèques médicales et professionnels de l'information de la santé, lors de réunions, de séminaires et de conférences ou de le joindre à toute correspondance d'intérêt dans ce domaine. Nous souhaitons que vous communiquiez le plus rapidement possible au secrétariat de l'EAHIL/AEIBS le nombre de copies que vous désirez recevoir dans ce but promotionnel qui représente une réelle collaboration de votre part au sein de notre Association. Nous vous en remercions vivement d'avance. C'est grâce à la contribution de ses membres que l'Association peut poursuivre l'enrichissement de son information et de sa coopération dans le domaine de la santé au sein de l'Europe.



#### **WHILA - COMMUNICATIONS**

Tony McSEAN, British Medical Association, a fait parvenir au secrétariat de l'Association le texte de la communication qu'il a présentée lors de la dernière session de notre Séminaire sur l'Aspect Humain dans l'Automatisation des Bibliothèques (WHILA): "Is CD-ROM a Transient Technology?", by Tony McSean and Derek Law. Le texte intégral de cette communication, ainsi que de celles qui ont été présentées lors de WHILA, peut être obtenu sur demande au secrétariat de l'EAHIL/AEIBS.



#### **CHANGEMENTS D'ADRESSE AU SEIN DE L'ASSOCIATION**

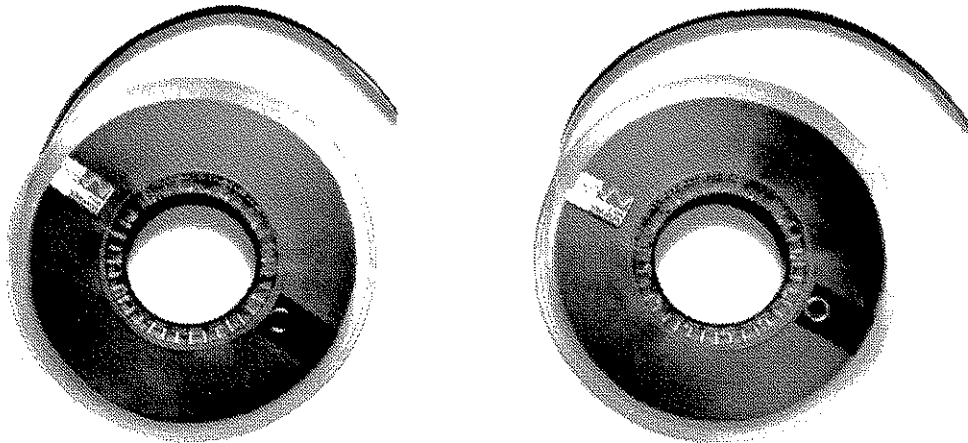
**Ursula HAUSEN:** nouveau fax: +49/511/532 3346 (le 532 5550 peut être encore utilisé en cas de nécessité)

**Françoise ALPTUNA, Membre de la Rédaction:** Nouvelle adresse professionnelle: Bibliothèque Interuniversitaire de Médecine, 12 rue de l'Ecole de Médecine, F-75270 Paris Cedex 06, France, Tel.: 33/1/40 46 19 53

**Vanna PISTOTTI, Membre italien du Conseil:** nouveau tel.: +39/2/3901 4353

(Les membres de l'Association qui le désirent peuvent signaler au secrétariat de l'EAHIL/AEIBS tous changements pour insertion dans la Newsletter).

# SOCIAL SCISEARCH®



ISI  
is good for your health.

**T**hat's right. It's not just an online database for the social sciences. It also covers the world's leading research journals in many health-related fields including:

Geriatrics • Health Policy • Medical Librarianship • Nursing • Psychiatry  
Psychology • Public Health • Rehabilitation • Social Work • Substance Abuse

And Social SciSearch's highly reputed currency ensures that you get the most up-to-date information on recent developments in these critical areas. While its retrospective coverage enables you to survey the literature for in-depth studies of today's problems and policies.

Social SciSearch is available through BRS, DIALOG and DIMDI. For more information, call or write to the ISI office nearest you.

Social SciSearch—it's the picture of health.

**Institute for Scientific Information®**  
3501 Market Street, Philadelphia, PA 19104 USA 215-386-0100  
132 High Street, Uxbridge, Middlesex UB8 1DP, UK 44-895-70016



S-441-6178

# INVITED ARTICLE

## TRAINING HOSPITAL LIBRARIANS FOR WORK WITH HOSPITAL PERSONNEL AND PATIENTS

### *FORMATION DES BIBLIOTHECAIRES MEDICAUX D'HOPITAL EN VUE D'UNE COLLABORATION AVEC LE PERSONNEL HOSPITALIER ET LES MALADES.*

*Ce cours a été conçu comme une réponse aux bibliothécaires d'hôpital qui demandaient plus d'informations psychologiques les aidant à développer leurs compétences réciproques. Dans ce cours ont été explorées des voies permettant aux bibliothécaires d'améliorer leur "image". Le "jeu de rôle" a été utilisé dans de petits groupes, ceci donnant des aperçus sur les sentiments et priorités ressentis par les médecins, les administratifs, les malades, etc..*

It was 1984 when I started training hospital librarians in Germany. This was organized by Detlef Schwarz, who works for the German Institution of Librarians in Berlin (Deutsches Bibliotheksinstitut Berlin, DBI). The motivation came from practising hospital librarians who wanted special psychological information and ideas to improve professional action. They mentioned many problems: meetings with patients, medical staff and administrative staff. Also the hospital librarians themselves were a small inhomogenous group, not well organized, so that they had problems with their own professional image. They work alongside another group of people (housewives, women trained as booksellers, etc.) who try to do the same work but voluntarily, i.e. often without payment. This group has a different "professional" identity and motivation. All these problems affect the professional identity of hospital librarians and the visibility and importance of their work.

#### Components of the course

You can see that we are dealing with a very complex problem. Therefore my training of 1 1/2 days always uses several components: the 'politics' of the situation, the understanding of professional roles within a clinic, psychological information on the effects of illnesses, special training in communication and integrating the individual aspects of each librarian with their professional efforts. I shall give a summary of these components. First we try to explore the attitudes and expectations of hospital librarians, of patients and clinical staff. These determine communications, the corresponding actions and professional orientation, so producing a political aspect to the work of hospital librarians. This affects the attitude of the other groups. For example people tend not to borrow books if they get the opinion that only second rate staff use a library. Or, if the librarians think of themselves as therapists, or teachers, they try to work in that manner and may not realise the needs of the recipient. This means that one must reflect on the professional context of the work of librarians to find helpful interactions, and create a good library service.

#### The image of the librarian

One example is contact with administrative staff. Normally librarians use the number of loans as a measure of their work, but this criterion is a bad one because it distorts the image of their work. The danger is that librarians themselves may identify their work with "loans" and may not register the other parts of their work as being important. When I ask librarians about their work, they often say, "My library has x-thousand books and we lend out y-thousand books from this." You can realize the critical identification of work. It gives rise to the widespread belief that the important work of a librarian is only to lend books, which is a very superficial view. Therefore librarians must themselves build up adequate categories of work, which are able to show the importance of their work. If their role is well defined, then they are more likely to get support from the administrative staff. They need to reinforce their own professional base. We train this "political aspect" with role playing, role reversal and attempts at new types of behaviour.

#### Meetings with colleagues

It is also important that librarians organize regional meetings with their colleagues as a part of their work and that they promote a professional organization too. In this way they can exchange information, reflect on their work, discuss public relations, invigorate their professional identity etc.

#### Professional roles - patient roles

The next aspect of training is to learn to understand several relevant professional roles of people who work in a hospital and the roles of patients. One concept is to divide a role into a "social role" (for example: a "teacher", a "librarian" - stereotypes) and into a "psychodramatic role" (the individual part of a social role, e.g. the teacher "Peter", the librarian "Sally"). This is a useful method in practice to find several psychosocial roles combined with psychodramatic parts. By using role reversal and a double

technique it is possible to collect many relevant experiences with all these role components. The aim is to find a level of communication and interaction which allows contact and understanding of all aspects. That means that you can discover relevant attitudes, expectations, actions (yours and that of your partner) which create fair ways of connecting two interests. For example, physicians or nurses do not have too much time and they may want only a little information. If librarians pay attention to that, they are more easily heard and get better contact for exchanging other relevant information - for instance the needs or reactions of patients, which are important for physicians and nurses; or to call attention to interesting new books, articles, etc. The point is that a librarian would be actively starting the development of useful interactions.

### Contact with patients

The understanding of patients' roles is an important aspect. First we have to reflect on the special situation of patients in hospital (the different daily rhythm, the restricted intimacy, a special form of isolation, etc). These produce special reactions and interactions (depression, conflict with other patients, etc). A second factor is the need for a considerable amount of information about the psychological effects of illnesses. For example it has been found that people with cancer are depressed, discouraged and develop a special defence behaviour which is necessary for their survival. The skill of a librarian is to perceive the emotional situation of the patient, to find a way of communication and to get a connection to his professional work, in a reasonable, fair manner. In my training sessions we often play these types of situations and the participants can see that one does not need much time to come to a level of understanding and eventually a solution. Similarly patients with cardiac problems may be impatient and speak quickly and explosively. So questions from librarians can sometimes evoke vehement reactions. When a librarian knows these facts he will not immediately think that he has made a mistake with his questions, because he can see the interaction from a different standpoint. A role reversal can help to discover a way of communicating with that patient.

### Social and psychological reactions of patients

Another factor is the playing of "typical patient reactions", which is less related to illness than to the social context ("spokesman of the patients" in the room: "We don't read!" "We don't need books!") or psychological roles (resistance forms: people who do not like to speak; the right of a person to refuse to read books; patients who like to read trivial literature, etc). These problems often put in

question a librarian and his professional work. We try to find the librarian's personal attitude and the professional approach in the context of respect for that patient. But that does not mean that librarians should not have any communication with that patient! They can try to communicate by making an effort to understand the attitudes of these patients. This might lead a patient to change his attitude or alternatively, the librarian might gain a sufficient amount of experience in the attitudes of patients to create new ideas for professional actions/approaches in such cases. This is important work for a librarian.

### Different forms of communication

The training also includes special exercises in communication forms. The participants learn to understand some relevant aspects: the perception of nonverbal and verbal communication, the importance of the emotional part within a communication, active listening, to use disturbance or some types of communication as a warning signal; to learn not to believe that one has understood someone immediately (it is better to control it with some questions), not to try to convince or educate the other person etc. Some rules are given in Roger and other trainers.

### Actions and Results

Communication alone is not sufficient. You need actions and results. Thus role playing should also demonstrate how one can time actions to obtain the optimal result. There are different forms of actions, since people have different temperaments and play their own individual roles. It is not handicap when a librarian has problems in meeting a patient with cancer, but he must learn to speak about it openly. Often this will create surprising methods of communication and contact.

It is important that the individuality of a person finds an adequate form of expression (psychodramatic role). Then the professional work of a librarian develops exciting and interesting aspects which benefit everyone.

The feedback from the training sessions was good. Therefore we have had two further training courses. I hope that I have demonstrated a little bit of this training. My experience are summarized in the book cited below.

GASSNER, B 1988. Krankenhauspatienten als Bibliotheksbenutzer. DBI Materialien 80. (Berlin DBI, Bundesallee 1984/1985.)

**Burghard Gassner,**  
Dipl. Psych. Pad. MA., Am Heiligenbuckel 7, D6921  
Spechbach, W. Germany

# NEWS FROM EUROPE

## EUROPEAN LIBRARIES AND PUBLISHERS *BIBLIOTHEQUES EUROPEENNES ET EDITEURS*

"One World of Information: OSI and EDI", a joint recommendation of the Working group of European librarians and publishers (ELP)

In order to connect local systems to other international computer systems Open Systems interconnection (OSI) standards have been accepted and widely adopted especially for electronic message handling. EDIFACT (Electronic Data Exchange for Administration, Commerce and Transport) is a set of rules for the composition of trade messages, including pricing, cataloguing, purchase orders and invoices. This standard is being increasingly adopted in Europe as well as North America. The working group is thus encouraging and recommending that the "publishers, librarians and booksellers stage a joint European effort to explore the potential and technology of combined use of X.400 electronic mail and EDIFACT messages in their common world of information." Based on a leaflet produced by ELP.

Further information about this organization may be obtained from: STM (International Group of Scientific, Technical and Medical Publishers), Secretariat, Keizersgracht 462, 1016 GE A, Amsterdam, The Netherlands.



## MEETINGS

### **I F L A '90, STOCKHOLM, SWEDEN**

The IFLA Section of Biological and Medical Sciences Libraries Standing Committee met twice during the IFLA Conference. The programme of the Section at the IFLA '91 Conference in Moscow was discussed. Mr Boris R. Loginov, from the Soyuzmedinform and Director of the State Central Scientific Medical Library in Moscow, will organise the programme together with colleagues from other Eastern European countries.

There will be a joint session with the Science and Technology Section with Professor Kiselev, Director of the All-Union Institute for Medical and Medico-Technical Information, Moscow, speaking on communication technologies.

The Sections's own session will deal with recent journal issue, conversion and preservation; disaster control planning for libraries. A workshop will be held for health sciences librarians. It will be devoted to on-line access to data bases.



## FIRST EUROPEAN CONFERENCE ON LIBRARY AUTOMATION & NETWORKING (ECLAN),

BRUSSELS, 9/11 MAY 1990 - BELGIUM

### **PREMIERE CONFERENCE EUROPEENNE POUR L'AUTOMATISATION ET LES RESEAUX DE BIBLIOTHEQUES, BRUXELLES, LES 9-11 MAI 1990 - BELGIQUE**

*A brief report on this Conference from Marc Walckiers appeared in the July Newsletter - Un bref compte-rendu sur cette Conférence, par M. Marc Walckiers, a déjà paru dans l'édition de juillet 1990*

## CEC Action Plan for Libraries

One of the most interesting papers was on the CEC Plan of Action for Libraries which was discussed by Mme Ariane Iljon of DGXIII of the Commission of the European Community. The Plan proposes action lines which cover the development of machine-readable resources, the interconnection of networks, the provision of new and enhanced user services, the development of new IT library products, and the provision of training, experience and support. A number of national focal points for the plan have been set up in the member states and librarians interested in submitting projects for consideration under the Plan should, in the first instance, contact their National Focus Point.

Derek Law, Librarian of King's College and Chairman of the IFLA Committee of Biological and Medical Libraries, discussed the planning and implementation of a project under the Plan. King's College has acquired a partner for the retrospective conversion of catalogue records for their collection of Greek literature. Their partner is the Library of the University of Crete. Mr Law examined the difficulties involved in finding partners from other CEC countries, the lessons learned from existing projects and the importance of channelling all projects through the National Focus in each country.

## The Development of Library and Information Services on Academic and Research Networks

Peter Stone, Sub-Librarian for Information Services at the University of Sussex, described how network developments have created additional opportunities for library co-operation and the provision of additional information services for end users. Today academic and research networks support file transfer, electronic mail and interactive terminal access. Peter Stone discussed the current use, problems and development of wide area networks and

provided examples from the Joint Academic Network (JANET) in the United Kingdom.

### **The Introduction of New Technologies and their Effect on Access to Information**

Pierre Pelou, Director of the United Nations Library at Geneva spoke of the new technologies in the U.N. Library, of information retrieval online, and on CD-ROM. The construction of databases of U.N. documentation and the implementation of their newly acquired integrated computer system URICA, a MacDonnell Douglas product, were discussed.

Mel Collier, Head of the Information Centre at Leicester Polytechnic, is responsible for library computing and communications in the College. He spoke of the development of local area networks and their impact on management and training. He pointed out that the networked library is an extremely complex and dynamic organisation. New training programmes and new management skills need to be developed, and co-operation between European libraries on the development of professional and management skills should, he recommended, be investigated.

### **CD-ROM Technology and its Implications for Libraries and End Users**

Monique Cleland, Vice President of EAHIL and a member of the Organising Committee of the Conference, asked if CD-ROM meets our needs. She pointed out that users have taken this new medium in hand and are managing to use it effectively ignoring many of the rules of correct searching procedures used by librarians. OPACS and CD-ROM at the University of Bielefeld in the Federal Republic of Germany were discussed by Karl Neubauer. This Library has successfully extended its original stand alone CD-ROM system into a network, using OPTIMET optical network software.

Stuart Ede, recently appointed Director of the National Bibliographic Service of the British Library, stressed that CD-ROM systems must be closely integrated into the library services and procedures, if they are to realise their full potential.

### **Interlibrary Loans**

Christine Deschamps, well known to medical librarians, spoke about LIBACT 2/ILL. This is a pilot demonstration project of interconnections between the ILL messaging systems of three countries (United Kingdom, Netherlands and France) and it is co-financed by the Commission of the European Communities DGXIII-B. Mme Deschamps gave a brief history of the project, details of problems raised with the project and discussed possible solutions.

**Beatrice Doran, Librarian Royal College of Surgeons  
123 St Stephen's Green, Dublin 2, Ireland**

### **REUNION DES ASSOCIATIONS BIBLIOTHECAIRES ET DOCUMENTALISTES FRANCAIS CONCERNANT LE PLAN D'ACTION EUROPEEN POUR LES BIBLIOTHEQUES - FRANCE**

#### **MEETING OF FRENCH LIBRARIAN AND DOCUMENTALIST ASSOCIATIONS ON THE EUROPEAN ACTION PLAN**

Les Associations de Bibliothécaires et Documentalistes Français (ABS, ADBS, AENSB, FFCB) se sont réunies à Strasbourg les 19-20 juin dans le cadre de deux journées d'étude sur le Plan d'Action pour les Bibliothèques, développé par la DGXIII de la Commission des Communautés Européennes.

Les modalités du Plan d'Action furent présentées par Mrs A. Iljon. Elle souligna le rôle majeur que doivent jouer les comités nationaux formés comme point focal pour toutes les procédures concernant la préparation d'un projet à soumettre dans le cas de ce Plan. Tout projet devrait faire appel à des partenaires d'autres pays et refléter une véritable coopération internationale. Les projets à proposer doivent faire appel de préférence à des technologies de pointe pour leur réalisation et doivent présenter un caractère innovateur. En plus, les propositions de projets doivent montrer un respect des normes nationales en vigueur, et établir une certaine cohérence avec d'autres projets qui pourraient être en voie de développement à l'échelle nationale. Plusieurs projets en voie de réalisation illustrèrent les discussions dont celui sur le prêt interbibliothécaire, présenté par Christine Deschamps. Ce projet fait appel à l'interconnexion des systèmes ouverts et se développe en collaboration avec la France, les Pays-Bas et le Royaume Uni. Ce projet est particulièrement représentatif des caractéristiques exigées pour un support de la Commission des Communautés Européennes.

En plus d'un support financier éventuel, le Plan d'Action de la Commission des Communautés Européennes devrait permettre de resserrer les liens entre pays par une collaboration étroite au-delà des barrières politiques ou des limites géographiques.

Les comptes-rendus de ces journées seront publiés prochainement.

**Monique Cleland**  
Bibliothèque et Centre de Documentation de la Faculté  
de Médecine BH 08, 46 rue du Bugnon  
CH-1011 Lausanne, Switzerland





**SPANISH CONFERENCE ON DOCUMENTATION AND INFORMATION IN HEALTH SCIENCE - SPAIN**

**CONFERENCE ESPAGNOLE SUR LA DOCUMENTATION ET L'INFORMATION DANS LES SCIENCES DE LA SANTE - ESPAGNE**

The Third Spanish Conference on Documentation and Information in Health Science was held in Seville on March 14-16, 1990. The Conference was organized by the Andalucia Medical Library Association, and sponsored by the Andalucia Health Service and the University of Seville.

During the three days of the Conference, 200 participants from Spain and Portugal discussed the following subjects:

- The legal framework of the health services libraries;
- The management and organization of health service information and libraries;
- The library network and interlibrary cooperation;
- Continuing education and user training.

At the end of the Conference, it was decided to hold the Fourth Meeting next year in Lisbon (Portugal), which will be the first joint Spanish-Portugese Conference on Documentation & Information in Health Science.

M.F. Ribes-Cot,  
Biblioteca, Hospital Nacional "Marques de Valdecilla",  
E-39008 Santander, Spain



**PERSONAL BIBLIOGRAPHIC SYSTEMS**

**ACHAT GROUPE DE LOGICIELS "REFERENCE MANAGER" A LA BIBLIOTHEQUE DE LA FACULTE DE MEDECINE DE L'UNIVERSITE DE LIEGE - BELGIQUE**

**BULK PURCHASE OF THE SOFTWARE "REFERENCE MANAGER" AT THE LIBRARY OF THE FACULTY OF MEDICINE AT THE UNIVERSITY OF LIEGE - BELGIUM**

A la demande de quelques uns de nos lecteurs, nous avons demandé à la firme BILANEY de Düsseldorf d'organiser, pendant un jour, des démonstrations du logiciel "Reference Manager" dans notre Bibliothèque. Suite à cette démonstration, un achat groupé de 11 logiciels fut effectué pour différents services de l'Université (non pour la bibliothèque) en bénéficiant d'une ristourne de 30%. Il est dommage qu'il ne soit pas possible d'obtenir les mêmes conditions de prix lors des achats de logiciels réalisés ultérieurement au coup par coup.

Les logiciels sont en fonction depuis un an; leurs utilisateurs se montrent satisfaits. Au moyen du module de capture (disponible en option), il leur est possible de

transférer des références bibliographiques du CD-ROM Medline Cambridge de la Bibliothèque vers leurs propres fichiers. A signaler que cette opération ne fonctionne que pour des références en format complet.

Françoise Noël  
Bibliothèque de la Faculté de Médecine,  
Université de Liège,  
Centre Hospitalier Universitaire du Sart Tilman B.35  
B-4000 Liège (Belgium)



**CD-ROM**

**CD-ROM AT THE INSTITUTE FOR MEDICAL INFORMATION, PRAGUE - CZECHOSLOVAKIA**

**LE CD-ROM A L'INSTITUT POUR L'INFORMATION MEDICALE DE PRAGUE - TCHECOSLOVAQUIE**

The Institute for Medical Information in Prague was the first library and documentation centre in Czechoslovakia to implement CD-ROM based information services in 1988. At the present time, two CD-ROM products have been routinely exploited, namely Excerpta Medica Library Service and Cancer-CD, both produced by Silver-Platter with annual updates.

Some 100 searches are now executed by our staff each month. They are provided free of charge. They yield a high level of relevancy and the reaction of users has been generally positive. In our experience CD-ROM - despite some significant benefit over online access - still supplements rather than replaces online services.

The recent Workshop on Human Issues in Library Automation (WHILA) and the European Conference for Library Automation and Networking (ECLAN) in Brussels provided a splendid opportunity for mutual exchange of ideas and information on integrating CD-ROM into the library environment. Based on the experience of other European libraries, we should like to subscribe to Medline on CD-ROM and make at least five years available to our users. Besides that, we are considering installation of CD-ROM workstations in several medical faculty information centres. By that time our end-users should be sufficiently computer literate to benefit from such a permanent access to biomedical information.

However, present-day economic problems and budget restrictions seriously hamper the possibility of putting our plans into action. We believe, nevertheless, that CD-ROM will in near future become a major information source for Czechoslovak health professionals.

Magda Lichà  
Institute for Medical Information, Sokolskà 31,  
121 32 Prague 2, Czechoslovakia



## NEWS FROM VARIOUS COUNTRIES

THE MEDICAL FACULTY LIBRARY IN THE  
NEWLY BUILT GENERAL HOSPITAL IN  
VIENNA - AUSTRIA*LA BIBLIOTHEQUE MEDICALE DE LA FACULTE  
AU NOUVEL HOPITAL GENERAL DE VIENNE -  
AUTRICHE*

The Vienna Medical Faculty Library (FBM) is one of four faculty libraries at the University Library of Vienna. It was officially established in 1986 in order to centralize the medical literature which was until then divided up between the main university library and the preclinical and clinical departments and institutes. Since September 1989, the central accommodation of the Medical Faculty Library has been located in the newly built Vienna General Hospital (Allgemeines Krankenhaus). The library was one of the first institutions to move into the new building which will accommodate 33 clinical departments and institutes after its scheduled completion in 1993.

At its new location the Medical Faculty Library covers an area of 3720 m comprising the so-called scientific library, the textbook section, storage area, and the librarians' offices. The scientific library contains the periodical collection and special clinical literature - for reference only. The textbook section, which was formerly housed in the main University library and which will open to students in October 1990, mainly offers multiple copies of required textbooks and basic medical literature. Textbooks may be read in the library or borrowed. In total there are 425 reading places, 187 of which are in the textbook section. In addition to the main reading areas separate rooms are available for group study.

At the moment, the library staff numbers 20 persons working at the central location and 5 in the decentralized libraries. The designated number of staff is 33, which should be achieved during the final stage of completion in 1993.

The main function of the Medical Faculty Library is the administration of the literature existing at all of the approximately 70 medical departments and institutes. Since January 1990 all the books and periodicals have been acquired, maintained and distributed by our central office. Thus a large number of periodicals which had formerly been delivered directly to the final users had to be diverted to our new address. Of course this change created initial problems, mainly because nearly all of the final users are currently distant from our new location.

The main emphasis in the new library is on the development of a comprehensive periodical collection which will eventually be centralized in the scientific library. At the moment, the collection comprises approximately 1100

current periodicals. In total, the periodical department takes care of more than 2500 (regular and irregular) serials, with quite a few multiple copies. When the clinical departments move into the new building, their literature will be integrated with that of the scientific library. Then the costly problem of multiple copies of the same periodical should be easier to handle.

Periodicals stored in the institutes and clinical departments of the medical faculty may be searched by titles in the 'PZUW' (central catalogue of periodicals at the University Library of Vienna) comprising four volumes (ed. 1986). A supplement will be published in fall 1990. The actual updatings are included in the on-line version of the OEZDB (Austrian Periodicals Data Base). This data base is also published periodically in a microfiche edition and can be ordered from Oesterreichische Zeitschriftendatenbank c/o Oesterreichische Nationalbibliothek, Josefsplatz 1, A-1015 Vienna.

The Medical Faculty Library also takes part in international loans. However these services are hampered by the large amount of decentralized literature. Along with the increase of current periodicals in the scientific library, i.e. with the moving in of further departments and institutes, international loans will become easier.

The Medical Faculty Library is connected to the automated Austrian library system BIBOS which up to now allows acquisitions and cataloguing by computer. In the scientific library readers are asked to use the OPAC terminals in order to find the literature. There is no printed catalogue for our books. Non-print media offered to our readers includes Current Contents on diskette and Medline on CD-ROM. In addition, on-line access to external databases is possible in the information retrieval department. Accessible hosts are DIMDI, Dialog, ESA-IRS, STN and Data-Star. For university staff on-line literature searches are currently free of charge.

Further aims will be the extension of opening hours, the increase in current literature and a better approach to literature, for example by building up a keyword catalogue. Many of these aims depend on an increase in library staff, a problem that seems to be common in libraries all over the world.

**Helmut Leitner, Gabriele Erhart,**  
Fakultätsbibliothek für Medizin  
an der Universität Wien,  
Währinger Gürtel 18-20, A-1090 Wien, Austria



## **ETHNIC HEALTH DATABASE - U.K.**

### ***BASE DE DONNEES DE SANTE ETHNIQUE***

Is any library willing to co-operate with us in making a European database concerned with the health problems of ethnic minority groups, migrant workers etc. At the University of Leicester we have been collecting bibliographic references relevant to ethnic minority groups in the U.K. for some years now and we are beginning to computerize it using Librarypac - a relatively inexpensive but versatile software package for a pc. We hope to make the "search only" version available to readers shortly.

We are also exploring ways in which we could collaborate with the Centre for Research in Ethnic Relations at the University of Warwick, since our two databases complement one another with relatively little overlap. As people find it easier to look for employment in different parts of Europe, we would like to find partners to build an effective database relevant to Europe - (Medline in particular is difficult to use in this context). So, if you already have a database of this sort or would be interested in such a project, please would you contact me.

Jean Shaw,  
Clinical Sciences Library, Leicester Royal  
Infirmary, PO Box 65, Leicester LE2 7LX, U.K.



## **HEALTH PROMOTION - WALES, U.K.**

### ***PROMOTION PROFESSIONNELLE DANS LE DOMAINE DE LA SANTE - PAYS DE GALLES***

Part of the Government's strategy towards health services is to stress through campaigns and research the prevention of ill-health. Health promotion seeks to enable people to make informed choices about their behaviour as it affects their health. Making information available is central to this work, but there has been as yet no systematic attempt to discover what information will best assist health promotion workers in raising public awareness.

A new research project based in Aberystwyth, Cardiff and Bangor will use interviews, workshops and questionnaires to identify, measure and evaluate the text and statistical information most useful in health promotion. Systems analysis techniques will be used to model information flows and to gain a full understanding of what information is needed and in what form it should be provided.

The project is a collaboration between the Department of Information and Library Studies in Aberystwyth, the Health Promotion Authority for Wales in Cardiff and the Bangor Health Promotion Unit of Gwynedd Health Authority. Project Directors are Tony Woodward of the

Health Promotion Authority and John Hepworth of UCW Aberystwyth.

Later stages of the work will assess the use by health promotion workers of databases provided by the Health Promotion Authority and will suggest ways in which the delivery and presentation of information may be enhanced. The project is being funded through the medical information programme of the British Library Research and Development Department and the Welsh Office has facilitated the purchase of computing and telecommunication equipment for the project.

The research will be described in a paper accepted for the Conference, "Medical Informatics Europe 90" to be held in Glasgow later this year.

Department of Information and Library Studies,  
C.P.C. Aberystwyth U.C.W., Wales, U.K.



## **ANNUAL CONFERENCE OF THE LIBRARY ASSOCIATION, LEEDS, UK**

### ***CONFÉRENCE ANNUELLE DE LA "LIBRARY ASSOCIATION", LEEDS***

The Library Association of the United Kingdom is holding a different sort of Annual Conference in 1991. It is called "Under One Umbrella" and in it each group, branch or section of the Library Association is being given a session to itself to describe/market/demonstrate its unique qualities, aims and objectives. As the UK Library Association has c.25,000 members, this Conference will cover every type of library and service existing in the UK. For example, the Audio Visual and IT groups will be present. It is being held in Leeds, from Friday 5 July until Sunday 7 July 1991 inclusive at a cost of approx. 100. Visits to the Leeds Medical School Library and British Library are included. Further details from either: Rob Palmer, Conference Director, Library Association, 7 Ridgmount Street, London WC1E 7AE (phone 071/636 7543 for general enquiries), or Alison Ray for MHWLG, Scarborough Postgraduate, medical Centre Library, Scarborough Hospital, Scarborough, N.Yorkshire YO12 6QL (phone: 0723/368111, ex.24). It is hoped that EAHIL will be able to coordinate some continuing education courses in the context of this event. Further information will appear in the next issues of our Newsletter.

Fiona M. Picken  
N.W.Thames, Regional Library and Information Service  
Charing Cross & Westminster Medical School,  
London SW1P 2AR, UK



**NEW DIRECTOR FOR DGXIII-B, COMMISSION OF THE EUROPEAN COMMUNITIES**

Frans DE BRUIENE has replaced Cornelis Jansen van Rosendaal as Director of the Directorate General XIII, Telecommunications, Information, Industries and Innovation.

**7th INTERNATIONAL CONGRESS ON MEDICAL LIBRARIANSHIP**

Lois Ann Colaianni, Secretary of the IFLA Section BMSL Standing Committee has been appointed International Co-Chair for the organisation of the Seventh International Congress to be held in Washington in 1995 as a joint event with the Medical Library Association (US) Annual Meeting.

**PUBLICATIONS****NEW PRODUCTS**

Huguier M. et al 1990. La rédaction médicale de la thèse à l'article original, la communication orale. Paris: Doin. 2-1040-0611-3.

**New service at UNISIST:** Service Express within 1 day of receiving the request and delivered by private courier; Service Fax via telecopy within 2 hours of receipt. The list of periodicals is comprised of 27,500 titles, international in scope and covering the sciences, technology, medicine. Also access to 100,000 reports, thesis and Congress summaries. Online consultation of the database and requests: *Minitel 3614 code INIST4. For information contact INIST Diffusion 33.83.504 664*

**News from ISI: Enhancements to Focus on: Global Change, The Multidisciplinary Guide to Current Research on Global Change** through the addition of English language author abstracts. The KeyWords Plus feature expands all Current Contents on Diskette products. This adds searchable descriptors that have been drawn from the references cited in each article.

**The MedIndex system** is an interactive knowledge-based system for computer-assisted indexing of the medical literature. It has been developed by NLM. A report published by NTIS is available in the UK from Microinfo (Tel: 0420-86848)

**New databases at DIMDI: BIKE, Biotechnologie-Informationsknoten für Europa**, contains profiles of app. 2,000 organisations, institutes, and companies in Biotechnology. Reports main activities in R&D, products, company structure, contact names and addresses. GENTEC is a bibliographic database on gene technology. International in coverage, but emphasis on Europe and the Federal Republic of Germany. Contains scientific publications and published opinions of organisations and political groups. Both Databases are produced by Ge-

sellschaft fuer technologische Forschung mbh in Braunschweig-Stoeckheim.

**The Finnish Medical Society DUODECIM** has published a trial version of Physician's Desk Reference and database (PDRD), an electronic textbook for general practitioners containing two parts: the desk reference with summarized recommendations of diagnosis and therapy and the database with review articles as background knowledge on the same topic. Finnish, Latin and MeSH terms serve as search terms. A library of patient instructions, self-care and health education material is included. A ready-made MEDLINE search strategy pertaining to the various chapters are also available and can be activated in connection with Grateful Med on MIC. Several updates per year are planned, the editing resembling that of peer-reviewed medical journal. *For more information contact: Ilkka Kunnamo MD, Dudedcom Kalevankatu 11A, SF-00100 Helsinki, Finland*

**Armstrong C.J. and Large J.A. (eds) 1990. CD-ROM information products. An evaluative guide and directory. vol. 1.** Gower. app. 450 p. ISBN 0566036266.

**Alberico E. & Micco M. 1990. Expert systems for reference and information retrieval.** Meckler. 395 p. £29.50 ISBN 088736232.

**Fleming H. 1990, User education in academic libraries.** Bingley. 216 p. £19.60 ISBN 0853655294.

**Hayman L. 1990. 101 uses of dBase in libraries.** Meckler. 175 p. £21.50 ISBN 0887364276.

**Lane E.S. 1990. Microcomputer management and maintenance for libraries.** Meckler. 225 p. £24.50 ISBN 0887365221.

**Beiser K. 1990. Essential guide to dBase IV in libraries.** Meckler, 250 p. £25.00 ISBN 0887365302.

Stewart L., Chiang K.S. & Coons B. (eds) 1990. Public access CD-ROMs on Libraries: case studies. Meckler, 311 p. £24.50. ISBN 0887365167. Section 2 refers to medical and health science libraries.

Ausgewählte Zeitschriften fuer die europaischen Bibliotheken im Krankenhauswesen und im biomedizinische Bereich. Aalsmeer: EBSCO Subscription Services Europe, biomedical Division. Compilation of 1284 important titles compiled by the British Library, Instituto de Informacion y Documentacion en Ciencia y Tecnologia, Zentralbibliothek der Medizin and Royal Academy of Sciences in The Netherlands and containing brief descriptions, publishers' addresses and indexing services containing these titles. Available from: Arthur J. Eger, EBSCO Subscription Services Europe, P.O.Box 204, 1430 AE Aalsmeer, The Netherlands (Fax: 31/2977/23156).

NLM's pioneering work on the application of electronic imaging (EI) to the preservation of its paper collection is documented in a three volume report: Document Preservation by Electronic Imaging, vols. I-III. PB89-226518/GBB. \$47 (\$94 foreign); \$19 microfiche (\$38 foreign/mf). Volumes are available individually: Vol. I., Synopsis (28p) PB89-226526. \$15 (\$30 foreign); \$8 microfiche (\$16 foreign/mf). Vol. II.

The new edition of STM Information Booklet 1990-1991 has been published with a complete listing of the present 114 members ("headquarters") and their 163 subsidiaries ("affiliates"). Merger information included. Contact: STM Secretariat, Keizergracht 462, NL-1016 GE Amsterdam. The Netherlands

1990. La personne humaine face au développement des sciences biomédicales: 200 ans après la Déclaration des Droits de l'Homme et du Citoyen de 1789. Paris; LITEC. 142 p. FF.118. Reports and discussions from a colloquium held in Poitiers, France in May 1989.

Physicians, specialists, philosophers, lawyers and members of religious institutions participated in a dialogue on human, ethical and judicial issues in science, medicine and health care.

## EUROPE

Commission of European Communities. Council decision of 23 April 1990 concerning the framework programme of Communities activities in the field of research and technological development (1990-1994). (90/221/EURATOM, EEC). Official Journal of the European Communities, No. L117/28.5.90

Harvey J. and Harvey F. 1990. Improving chronic healthcare in Europe. British Journal of Health Care Computing 7(4):9-10 May.

IFLA '90 Stockholm: Section of Biological and Health Sciences Libraries. 3 papers given at the Session on 20 August 1990. Published in: "MIC News 1990. Supplement". Contact: Elisabeth Kjellander, Karolinska Institute, Library and Information Center. MIC-KIBIC, Box 60201, S-104 01 Stockholm, Sweden (Fax: +46/8/348793). In French available as IFLA papers: 78-BIOL-1-F (Sellwall); 079-BIOL-2-F (S.Thorsteinsdottir); 080-BIOL-3-F (E.Buntz).

Smith S. 1990. Primary healthcare in Europe. Nursing times 86(29):54-55, July 18. A brief report on a questionnaire survey on the role and training of home nurses in the EC. Four chief nursing officers replied: Greece, Spain, Holland and Denmark through other countries are mentioned.

Wilson H. 1990. Community nursing in Belgium. Nursing Times 86 (29): 56-57, July 18. Report on a working visit by a UK nurse to Belgium.

## FORTHCOMING EVENTS

**15-18 October 1990 - Espoo, Finland**

EUSIDIC's 20th Anniversary Conference, the European Association of Information Services: "Another 20 years".  
*For information: EUSIDIC secretariat, 9a High Street, Calne, Wilts. SN11 0BS, England - Fax +44/249 813 656*

**29-31 October 1990 - Berlin, F.R. Germany**

Arbeitsgemeinschaft fuer medizinisches Bibliothekswesen (FR Germany) Annual Meeting, Dr. Thomae Pharmaceutica, Biberach

**29 October: Meeting of hospital librarians**

*Information: Klaus Gerber, Bibliothek, Robert-Koch-Institut des BGA, Nordufer 20, D-1000 Berlin 65 - Tel. +49/30/450 3275*

**19-21 November 1990 - London, UK**

2nd International Conference on Interlending and Document Supply, organised jointly by Interlending and Document Supply and the IFLA Office for International Lending.

*Contact: Graham P. Cornish, IFLA Office for International Lending, British Library Document Supply Centre, Boston Spa, Wetherby, W. Yorkshire LS23 7BQ, UK - Tel. +44/937/546123 - Fax: +44/937/546236*

**November 20-22, 1990 - Paris, France**

1ère Convention Européenne des Bibliothèques de la Communication, Palais des Congrès, Paris  
*Organisation: Cercle des Bibliothèques Européennes, 11 rue de Lille, 75007 Paris Tel. 1/42603825 - Fax 1/42964063*



**January 27-February 2, 1991 - London, UK**

British Council Course: Medical Libraries: Effective Resource Management. Director of Studies Mr T.A. King.  
*For details, contact your nearest British Council office, or write direct to Courses Dept., The British Council, 65 Davies St., London W1Y 2AA, mentioning course no. 078.*

**May 28-30, 1991 - Bordeaux, France**

IDT 91, 9ème Congrès sur l'Information et la Documentation, organisé par l'ADBS et l'ANRT. Thème: "L'information, une dynamique pour l'Europe".  
*Contact: ADBS, IDT91, 25 rue Claude Tillier, 75012 Paris, France - Tel.: 1/43 72 25 25.*

**June 16-21, 1991 - Helsinki, Finland**

The Finnish Council for Health Education will host the XIV World Conference on Health Education in Helsinki, Finland. Theme: "Health - United Effort" ("La santé - Un effort commun") - ("La Salud - Un esfuerzo conjunto").  
*For General information, please contact: Mrs Aira Raudasoja, Project Manager, The Finnish Council for Health Education, Karjalankatu 2C 63, SF-00520 Helsinki, Tel.: 358/0/717 611 or the Conference Secretariat Office: Congrex Finland, P.O.Box 1031, SD-00101 Helsinki,*

*Finland, Tel.: 358/0/175 355.*

**July 5-7, 1991 - Leeds, UK**

Annual Conference of the Library Association in Leeds, UK (further details in the section "News from Europe").  
*Contact: Rob Palmer, Conference Director, Library Association, 7 Ridgmount Street, London WC1E 7AE (Tel: +44/71/636 7543) or Alison Ray for MHWLG, Scarborough Postgraduate Medical Centre Library, Scarborough Hospital, Scarborough, N. Yorkshire YO12 6QL (tel. +44/723/368111, ex.24)*

**July 7-14, 1991 - Harare, Zimbabwe**

Association for Health Information and Libraries in Africa (AHILA) - Association pour L'information et les bibliothèques de santé en Afrique (AIBSA). 3ème Congrès et Assemblée Générale de l'AIBSA - Thème: L'automatisation et les services d'information.  
*For information, contact: Mrs Helga Patrikios, Medical Library, University of Zimbabwe, P.O.Box MP 45, Mount Pleasant, Harare, Zimbabwe*

**August 18-24, 1991, Moscow, USSR**

57th Council and General Conference of IFLA, Moscow. Theme: "Libraries and Culture: their relationship" ("La bibliothèque et la culture : leur interaction").  
*For further information, please contact the USSR Preparatory Committee at the address: The Lenin State Library, 3 Kalinin Prospekt, Moscow 101000, USSR.*

**August 26-28, 1991 - Helsinki, Finland**

Third Scandinavian Conference of Medical Librarians, Helsinki. The Conference will be arranged by the Finnish Medical Librarians' Association, Bibliothecarii Medicinae Fenniae.  
*Contact: Eeva Kihlberg, Chairperson of the Organizing Committee, Helsinki University, Dental Library, Mannerheimintie 72, SF-00300 Helsinki, Finland - Tel. 358/0/4735 324 - Fax: 358/0/414 272.*

**September 9-10, 1991, Vandoeuvre-les-Nancy, France**  
SCICOM-2 - Deuxième Conférence Internationale "Communication Scientifique et Sciences de la Vie" - Second International Conference "Scientific Communication in Life". Technopole Nancy-Brabois, France. Avant programme/Preliminary programme: *Contact: Laboratoire d'Immunologie, Faculté de médecine, avenue de la Forêt de Haye, B.P. 184, F-54500 Vandoeuvre les Nancy, France, Tel. 83 51 59 64.*



**September 24-26, 1992 - Montpellier, France**

Third European Conference of Medical Libraries - 3ème Conférence Européenne des Bibliothèques Médicales, preceded by continuing education courses.  
*For information: Mrs Jeanet Ginestet, SANOFI Recherche, rue du Prof.J. Blayac, 34082 Montpellier, France - Tel. 33/67400133 - Fax: 33/67756321*

---

# Health Information and Libraries

INTERNATIONAL JOURNAL FOR MEDICAL,  
HEALTH AND WELFARE LIBRARIANS  
AND INFORMATION OFFICERS

NATIONAL INSTITUTE FOR MEDICAL  
INFORMATION AND LIBRARY  
BUDAPEST



VOL 1 1990

**BUDAPEST, HUNGARY**

**QUARTERLY**

Subscription rates : \$40 per year - \$20 for students - \$50 Publishing  
House and Companies. Articles and correspondence should be sent to the  
Editor: Dr Maria Benda, National Institute for Medical Information and  
Library, P.O.Box 278, Budapest, 1444 Hungary

# Health Libraries Review

VOL 7 NO 2 1990

## CONTENTS

- 46 Editorial—Mona Going MBE: a celebration at 80. *Jean Clarke and M. Joy Lewis*  
47 Mona Edgecombe Going. *M. Joy Lewis*  
52 Thirty years on: 'Going' over four editions. *Jean M. Clarke*  
56 Standards, guidelines and so on . . . *David A. Matthews*  
60 The psychology of reading: an essay in honour of Mona Going. *Ronald Sturt*  
65 The Sheila Moore Award: twenty-five years on. *Anne Willis*  
69 Reminiscence therapy in a Scottish hospital. *Margaret E. S. Forrest*  
73 The sole source: The Library of Congress National Library Service for the Blind and Physically Handicapped. *Vicki Fitzpatrick*
- 86 **Meeting Reports**  
LIPS and the Health Information Sector  
A Health Information Plan for the Northern Region  
Producing CD-ROM Documentation: UKOLUG Seminar  
DATA-STAR Annual Update Meeting  
Project 2000 and Multidisciplinary Education Centres in Hospitals
- 93 **Patient Information**
- 97 **Audio-visual**
- 99 **Information Technology**
- 105 **Book Reviews**
- 108 **Obituary**—Philip Wade
- 111 **Conference Supplement**

## BLACKWELL SCIENTIFIC PUBLICATIONS

Osney Mead, Oxford OX2 0EL

8 John Street, London WC1N 2ES

23 Ainslie Place, Edinburgh EH3 6AJ

3 Cambridge Center, Suite 208 Cambridge, MA 02142, USA

107 Barry Street, Carlton, Victoria 3053, Australia

Meinekestrasse 4, D-1000 Berlin 15, FRG

2 rue de Casimir Delavigne, 75005 Paris, France

Feldgasse 13, A-1238 Vienna, Austria



## GENERAL INFORMATION

### Executive Board :

Acting President :  
Past President :  
First Vice President :  
Second Vice President :  
Treasurer :  
Secretary :  
Assistant Secretary :

The secretariat of the Association is located : 60 rue de la Concorde, B-1050 Brussels, Belgium, Tel : 2/511 80 63 , Fax : 2/512 32 65.

All information regarding our Association (membership, organization, Newsletter, advertising rate, etc.) can be obtain from the address above.

The Newsletter is distributed free of charge to our members and is made up of contributions received from members and colleagues in various countries.

Contributions to Newsletter should be sent to :

Jean SHAW, Editor,

Clinical Sciences Library - University of Leicester - Leicester Royal Infirmary - P.O. Box 65, Leicester LE2 7LX (UK)

Tel : +44/533/52 31 00 - Fax : +44/533/52 31 07

## INFORMATIONS GENERALES

### Bureau Exécutif :

Ursula HAUSEN, W. Germany  
Marc WALCKIERS, Belgium  
Monique CLELAND, Switzerland  
Ragnhild LANDE, Norway  
Trevor A. KING, United Kingdom  
Brigitte BLUM, Switzerland  
Jeannet GINESTET, France

Le secrétariat de l'Association est situé : 60 rue de la Concorde, B-1050 Brussels, Belgium, Tel : 2/511 80 63 , Fax : 2/512 32 65.

Toutes les informations concernant l'Association (adhésions, organisation, Bulletin d'Information, publicité, etc.) peuvent être obtenues auprès de notre Bureau à Bruxelles.

Notre Bulletin d'Information est distribué gratuitement à nos membres et collègues de différents pays.

Les articles pour le Bulletin doivent parvenir à :

*EDITORIAL BOARD MEMBERS are as follows and are willing to advise potential contributors if required.*

Jean SHAW,	Editor - Rédactrice en Chef
Françoise ALPTUNA	Bibliothèque Universitaire de Médecine, 12 rue de l'Ecole de Médecine, F-75270 Paris Cedex 06 (France) - Tel : +33/1/40 46 19 53
Dariusz KUZMINSKI	Medical Information Center, Central Medical Library 22 Chocimska street, 00-791 Warsaw (Poland) - Tel : 49.78.53 - Telex : 81420
Leslie LOCCHÉ	Biblioteca Centralizzata, USL 28, Via Albertoni 15, I-40138 Bologna (Italy) Tel : +39/51/63 61 111 - Fax : +39/51/63 61 202
Maria Francisca RIBES COT	Hospital Nacional "Marques de Valdecilla", Instituto Nacional de la Salud, E-39008 Santander (Spain) - Tel : +34/942/34 75 93
Liisa SALMI	Medical Library, Kuopio University, Central Hospital, SF-7021 Kuopio (Finland) Tel : +358/71/17 37 70 - Fax : +358/71/16 34 10
Béatrice WILHELM	Medizinbibliothek, Öffentlich Bibliothek der Universität, Kantonsspital Basel, Hebelstrasse 20, CH-4031 Basel (Switzerland) - Tel : +41/61/29 31 95 - Fax : 41/61/25 15 00

## INSTRUCTIONS TO AUTHORS:

**Invited articles:** These will be commissioned by the Editorial Board, though suggestions regarding suitable subjects would be welcome. **Important :** *Whilst the Editorial Board endeavours to obtain items of interest, the facts and opinions expressed in those items are the responsibility of the authors concerned. They do not necessarily reflect the policies and opinions of the Association.*

**News from Europe:** these should be short -not more than about 400 words long. **Regular sections:** contributions to the **Publications** and **Forthcoming Events** sections are invited. They should be sent to the Editor of the section concerned (**Publications: Beatrice Wilhem; Forthcoming Events: R. Hoet**). The Editor would be pleased to hear of any ideas for invited articles-editorials and for general comment on the Newsletter of the Association's activities. These will be followed up where possible and may be published if, as with other items, the constraints of space and balance permit. At the moment the final copy has to reach the Editor at least two months before the publication date, though we hope to reduce production time. *The official languages of the Association are English and French.* News from the Association and the editorials will generally be translated; summaries in the second language will normally be published with invited articles, but otherwise items will be given only in one language. Contributions, other than those for the **Publications** and **Forthcoming Events** sections should be sent to the Editor.



**Europa 1992 ...  
für SWETS bestehen die Grenze  
längst nicht mehr!**

SWETS ist die einzige Zeitschriftenagentur die sich, mit ihrem Netz von 7 europäischen Büros in die Niederlande, GB, Frankreich, BRD, Schweden, Italien und Spanien wie auch in den USA, Japan und Brasilien, schon auf das Jahr 1992 vorbereitet hat.

Für nähere Auskunft wenden Sie sich bitte an:

**SWETS**  
SUBSCRIPTION SERVICE

**Europe in 1992 ...  
for SWETS the barriers  
are already down!**

SWETS is the single subscription agent ready for 1992, with its network of 7 european offices in Holland, UK, France, Germany, Sweden, Italy and Spain as well as in the USA, Japan and Brazil.

Local addresses available from:

PO. Box 830  
2160 SZ. Lisse / The Netherlands  
Tel.: 31-2521-35111  
Fax: 31-2521-15888  
Telex: 41325