



[www.eahil.eu](http://www.eahil.eu)

# Journal of EAHIL

European Association for  
Health Information and Libraries

**Vol. 21 no.1**

**March 2025**

**ISSN L-1841-0715**

The production of this journal  
was made possible by the generous support of:

**Oxford University Press**  
**Thieme Verlag**

# Journal of the European Association for Health Information and Libraries

Vol. 21 No. 1 March 2025

---

## CONTENTS

### MONOGRAPHIC SECTION

Navigating information resources for One Health,  
Global Health and Planetary Health  
Edited by *M.I. Metzendorf*

2

### EDITORIAL

*M.I. Metzendorf*

2

### BRIEF NOTE

Introducing Global Health, One Health and Planetary Health  
*M.I. Metzendorf*

3

### FEATURE ARTICLES

Researchers and resources rising to meet environmental challenges  
*K. Hawlena Clarkson*

5

CABI Global Health, more than just a database: a fresh perspective on global literature  
with a not-for-profit impact  
*J. Thay*

8

Identifying resources to support searching for One Health and Planetary Health topics,  
with a focus on grey literature  
*F. J.L. Brown*

14

### NEWS FROM EAHIL

Letter from the President  
*F. Gualtieri*

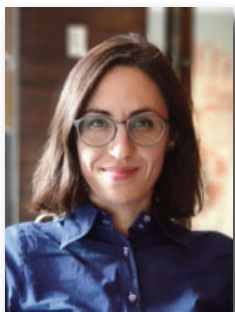
18

### PUBLICATIONS AND NEW PRODUCTS

*A. Barbaro*

20

# Navigating information resources for One Health, Global Health and Planetary Health



**Maria-Inti Metzendorf**

Member of JEAHIL Editorial Board

Heinrich-Heine-University Düsseldorf, Düsseldorf, Germany

Dear colleagues,

As medical librarians and health information professionals we are increasingly tasked with supporting research and decision-making in interdisciplinary fields. One Health, Global Health and Planetary Health represent interconnected approaches to population health that recognize the complex relationships between human, animal, and environmental well-being. This issue of our journal explores the information resources essential for navigating these broad domains, emphasizing the role of specialized databases and grey literature in capturing the full scope of available knowledge.

To lay the groundwork, my opening article provides key definitions, foundational literature, and an overview of major organizations engaged in these fields.

We are pleased to feature contributions from two major database producers whose work supports interdisciplinary health research. EBSCO Information Services, a leading US-based provider, presents two of its key databases that facilitate access to research relevant to these domains. CABI, a non-profit intergovernmental organization specializing in agricultural and environmental science, highlights its curated scientific knowledge and information solution that addresses the intersection of health, environment, and sustainability.

Beyond commercial and subscription-based databases, a wealth of vital information resides in grey literature – reports, policy documents, conference proceedings, and other materials not traditionally indexed in mainstream bibliographic databases. Our colleague Fiona Brown, from the University of Edinburgh, presents a curated list of complementary resources that extend our reach into governmental, non-profit, and institutional publications.

As information professionals, our ability to navigate these diverse sources directly impacts the quality and accessibility of research in One Health, Global Health and Planetary Health. I hope this issue provides valuable insights into the ever-evolving landscape of information resources and reinforces the essential role that librarians and information specialists play in advancing interdisciplinary health research for the well-being of all: people, animals, and the planet.

Wishing you a joyful and informative reading.

# Introducing Global Health One Health and Planetary Health

**Maria-Inti Metzendorf**

Cochrane Planetary Health Thematic Group, Institute of General Practice, Centre for Health and Society, Medical Faculty of the Heinrich-Heine-University Düsseldorf, Düsseldorf, Germany

## Abstract

*Understanding the concepts of Global Health One Health and Planetary Health is essential for health information professionals and medical librarians that wish to support research and education in these public health domains. This brief note aims to provide a short overview of the concepts.*

**Key words:** *Global Health; One Health; Environmental Health; environment.*

In an era of increasing global interconnectivity, the health of individuals, animals, and ecosystems is deeply intertwined. While Public Health is a concept that is well known to most health information professionals and medical librarians, three major frameworks – Global Health, One Health and Planetary Health – address the complex challenges posed by this interdependence. For health information professionals and medical librarians, understanding these concepts is essential to support research and education in these public health domains. The following table (Table 1) introduces each concept and highlights key organiza-

tions and publications, aiming to deliver a summary without the aim of being comprehensive.

Global Health, One Health and Planetary Health provide frameworks for addressing current and emerging health challenges from a holistic perspective. Understanding these concepts enables medical librarians and health information professionals to support interdisciplinary health research, inform global public policy, and enhance public health education. As the world faces increasing environmental and health crises, these health domains will be essential in understanding and shaping the determinants of a healthier future for all.

	Global Health	One Health	Planetary Health
<b>Summary of the concept</b>	Global Health is a multidisciplinary field that seeks to improve public health and achieve equity in health outcomes worldwide. It addresses transnational health issues, health determinants, and solutions, emphasizing cooperation and resource-sharing across borders. Global Health prioritizes access to healthcare, disease prevention, and health system strengthening, especially in low- and middle-income countries.	One Health is an integrated approach that recognizes the interconnectedness of human, animal, and environmental health. It emphasizes collaboration across multiple sectors – such as medicine, veterinary science, and environmental science – to prevent and manage health threats, particularly zoonotic diseases (e.g., avian influenza, COVID-19). It is essential in preventing pandemics and tackling antimicrobial resistance.	Planetary Health is a broader, multidisciplinary concept that recognizes that the health of the human civilization depends on Earth's natural systems. It encompasses climate change, biodiversity loss, pollution, land system change, freshwater change, biogeochemical flows, and other planetary boundaries. It analyzes the impacts of human disruptions to Earth's natural systems on human health and the more-than-human life on Earth.

*Address for correspondence:* Maria-Inti Metzendorf, Cochrane Planetary Health Thematic Group, Institute of General Practice, Medical Faculty of the Heinrich-Heine-University Düsseldorf, Building 17.11.02, Moorenstr. 5, 40225 Düsseldorf, Germany. E-mail: maria-inti.metzendorf@med.uni-duesseldorf.de.

<p><b>Key organizations</b></p>	<p>World Health Organization (WHO); United Nations Children's Fund (UNICEF); World Food Programme (WFP); Doctors Without Borders (Médecins Sans Frontières; MSF); International Committee of the Red Cross; The Global Fund.</p>	<p>World Health Organization (WHO); One Health Commission (OHC); Food and Agriculture Organization (FAO); World Organisation for Animal Health (WOAH); One Health Platform.</p>	<p>WHO Department of Environment, Climate Change and Health; Planetary Health Alliance (PHA); United Nations Environment Programme (UNEP); Intergovernmental Panel on Climate Change (IPCC); Intergovernmental Science-Policy Platform on Biodiversity and Ecosystem Services (IPBES).</p>
<p><b>Key literature</b></p>	<p>Jafar AJN, et al. Redefining global health and shifting the balance: the ARC-H principle. <i>BMJ Glob Health</i>. 2024 Feb 22;9(2):e014487.</p> <p>Turcotte-Tremblay AM, et al. Global health is more than just 'Public Health Somewhere Else'. <i>BMJ Glob Health</i>. 2020 May;5(5):e002545.</p> <p>Holst J. Global Health - emergence, hegemonic trends and biomedical reductionism. <i>Global Health</i>. 2020 May 6;16(1):42.</p> <p>Koplan JP, et al. Towards a common definition of global health. <i>Lancet</i>. 2009 Jun 6;373(9679):1993-5.</p>	<p>Pitt SJ, Gunn A. The One Health concept. <i>Br J Biomed Sci</i>. 2024 Feb 15;81:12366.</p> <p>One Health High-Level Expert Panel (OHHLEP). One Health: a new definition for a sustainable and healthy future. <i>PLoS Pathog</i>. 2022 Jun 23;18(6):e1010537.</p> <p>One Health Joint Plan of Action, 2022-2026. Working together for the health of humans, animals, plants and the environment. Rome: FAO; UNEP; WHO; WOA; 2022.</p>	<p>Caesar L, et al. Planetary Health Check Report 2024. Potsdam: Potsdam Institute for Climate Impact Research; 2024.</p> <p>Romanello M, et al. The 2024 report of the Lancet Countdown on health and climate change: facing record-breaking threats from delayed action. <i>Lancet</i>. 2024 Nov 9;404(10465):1847-96.</p> <p>Rockström J, et al. Safe and just Earth system boundaries. <i>Nature</i>. 2023 Jul;619(7968):102-11.</p> <p>Whitmee S, et al. Safeguarding human health in the Anthropocene epoch: report of The Rockefeller Foundation-Lancet Commission on planetary health. <i>Lancet</i>. 2015 Nov 14;386(10007):1973-2028.</p>

**Table 1.** *Introducing the concepts of Global Health One Health and Planetary Health*

*Submitted on invitation.  
Accepted on 17 March 2025.*



# Researchers and resources rising to meet environmental challenges

Kimberly Hawlena Clarkson

EBSCO Information Services, Ipswich, Massachusetts, United States of America

## Abstract

*The article explores trends in environmental studies at the university-level and how EBSCO Information Services curates its database resources to meet the needs of students and researchers. The author discusses leading environmental problems and their cross-disciplinary permeance, the influence of international political agreements, and the varying needs of undergraduate students, graduate students, faculty, and library administrators. The history, content, and value of the GreenFILE and Environment Complete databases are detailed, including the many different subjects they cover (ex. climate change, green building, pollution, environmental protection, forestry, and watersheds.) The author articulates her process for reviewing and selecting scholarly journals to be included in these databases, and shares reasons for why the study of the environment is so important.*

**Key words:** *environmental studies; academic databases; environmental science; sustainability; STEM education.*

## Introduction

Fast paced and interdisciplinary, environmental studies is the sun around which policy, social awareness, corporate priorities, and technology orbit. Its presence is immense and its problems urgent. At its core, this branch of science drives humanity toward a greater good, something much bigger than ourselves. According to academic trend reports, over the past 10 years university-level environmental studies programs have grown by an estimated 20% in the United States and Europe due to rising awareness, the appeal of interdisciplinary application to economics, ethics, and policy, increased state and private funding, and emerging career opportunities. There are nearly 3,000 universities across the United States (1) and Europe (2) looking to help address critical environmental issues. A significant theme covered at the 2024 Charleston Conference, an annual event for academic libraries and publishers held in South Carolina, USA, was sustainable practices and how to make libraries more environmentally friendly. Simply put, there is a big problem to solve out there, and no shortage of people rising to the challenge.

## Trends

Today's top trends in environmental studies won't be the same as tomorrow's, and at EBSCO Information

Services (EBSCO), a leading research database provider, we are committed to keeping up with what researchers study the most by indexing the most authoritative, informative, and high quality journals from around the world that report on the most pressing and emerging issues:

1. the adaptation of infrastructure and ecosystems in response to climate change;
2. the technology and impact of renewable energy;
3. waste management and the toxicity of single-use plastics;
4. the loss of land and marine biodiversity and ocean conservation;
5. environmental law, community inequalities, and policy research;
6. sustainable practices, water management, and agriculture;
7. investments in technology such as artificial intelligence and carbon containment;
8. human health and the environmental impact on illness.

International environmental agreements with commitments to tackle climate change and preserve the oceans and forests, such as the Paris Agreement and the United Nations Sustainable Development Goals (SDGs) have broadly influenced universities, compa-

*Address for correspondence:* Kimberly Hawlena Clarkson, EBSCO Information Services, 10 Estes Street, Ipswich, Massachusetts, 01938 United States. E-mail: [kclarkson@ebSCO.com](mailto:kclarkson@ebSCO.com)



nies, and organizations to create new priorities or evaluate existing ones to encourage progressive environmental engagement. SDGs that directly relate to the environment include n. 4 Quality education, n. 6 Clean water and sanitation, n. 7 Affordable and clean energy, n. 9 Industry, innovation, and infrastructure, n. 11 Sustainable cities and communities, n. 12 Responsible consumption and production, n. 13 Climate action, n. 14 Life below water, and n.15 Life on land (3). Many university programs mirror these goals if not link directly to them from their websites. Among its own environmental commitments, EBSCO delivers most consistently and visibly on n. 4, believing that the key to change is education, readily accessible information, and knowledge for all. To help researchers meet these and other goals, EBSCO provides subject-specific databases such as *GreenFILE* and *Environment Complete*.

### GreenFILE

*GreenFILE* is a multidisciplinary bibliographic database that was released in 2007 as a free resource to the library community to find scholarly and popular literature on environmental issues. Adopted quickly by liberal arts colleges, the index of journals, magazines, books, reports, trade publications, and case studies specifically highlights human-environment interaction (HEI). Today, *GreenFILE* remains widely available and provides entry points for research from 270 publishers across twenty-five countries covering climate change, green building, pollution, sustainable agriculture, renewable energy, recycling, and more. It indexes about 800 journals, as well as monographs, and currently comprises more than 1,3 million records. Researchers can access *GreenFILE* at [www.greeninfoonline.com](http://www.greeninfoonline.com) (Figure 1)

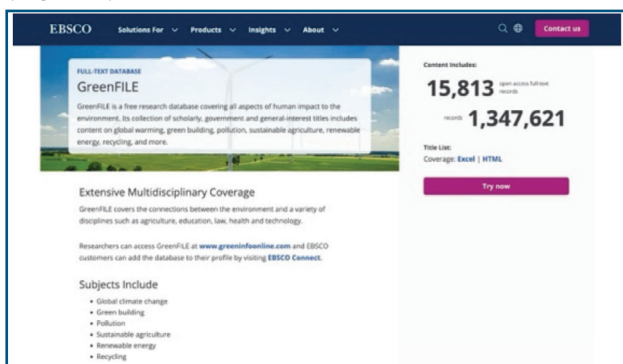


Fig. 1. Screenshot of *GreenFILE* product page.

### Environment Complete

Following closely on the heels of *GreenFILE*, we released *Environment Complete* in late 2008 to serve libraries and universities with burgeoning environmental programs (Figure 2). Today, with 1.6 million full-text records, it is a leading database providing hundreds of top environmental journals covering climate change, environmental protection, watersheds, forests and forestry, habitats, and more. It includes over seven hundred active, peer reviewed scholarly journals, and all its content is indexed and interconnected via a dedicated proprietary thesaurus and subject hierarchy of 16,896 preferred terms. With its high-quality subject indexing, EBSCO continues to break down barriers to information through Enhanced Search Precision (ESP) mapping, bridging the gap between content and end users through inclusion of natural language, and supporting all learning types through textual and visual subject browse and information literacy training through subject access points in more than 30 languages.

<b>Environment Complete</b> Active full-text journals and magazines	<b>TOTAL</b>
Active full-text journals and magazines	<b>838</b>
Active full-text, peer-reviewed journals	<b>735</b>
Active full-text, peer-reviewed journals with no embargo	<b>412</b>
Active full-text journals indexed in Web of Science or Scopus	<b>626</b>

Fig. 2. *Environment Complete* product details.

### Product development

As a Senior Product Manager, dozens of serial publications come across my desk weekly. I review each to make sure they meet our standards for inclusion in *Environment Complete*, *GreenFILE*, and other databases. I consider the publication's overall mission, quality, longevity, peer review process, the reputation of the publisher, and the mechanics of various research journeys. I mindfully accept (or reject) publications that best serve the needs of EBSCO's database end users by referencing a needs-based framework that strives to differentiate user groups based on an understanding of

the underlying drivers or needs behind a user's behaviors or attitudes. For example, a university undergraduate may find research overwhelming and needs content and functionality that allows him to familiarize himself with a topic, find relevant sources, and complete his assignment, whereas a graduate student may be looking to create a publishable, scholarly work and is willing to put in a higher degree of effort –her search strategies becoming more finely honed as she looks to support her thesis. I consider the needs of faculty, especially in their work to support interdisciplinary curriculum development in environmental studies and beyond. Not to be forgotten are the library administrators who use databases and publications for distinct reasons, such as assessing new offerings, configuring library resources, and acquiring and activating new content while riding the wave of growing campus demands and shrinking staff, an ever-ebbing tide.

### Conclusion

Last spring, my young daughter chose to pick up all the litter from our neighborhood playground – by herself. As her sneakered feet pattered back and forth across the mulch, she stuffed coffee cups, candy wrappers, and a plastic fork into the trashcan, and fished a cardboard box out of the bushes, the weight and shape of it too cumbersome for her little body. “Why do people litter? It’s bad for Mother Earth”, she huffed, determined to get the job done. A future environmentalist, perhaps. To researchers who work passionately (and

the librarians and faculty who support them) to address extreme weather conditions, rising sea levels, species extinction, food security, water scarcity, health risks, economic disruptions, growing geopolitical tensions, and fight irreversible cryospheric tipping points, EBSCO will provide the modern platform and authoritative resources you can trust, backed by globally respected practices and a commitment to aid the flow of information. So, why study the environment? Because the stakes are too high not to.

*Submitted on invitation.  
Accepted on 13 March 2025.*

### REFERENCES

1. EduRank. US's 100+ best Environmental Science colleges [Rankings] [Internet]. EduRank.org - Discover university rankings by location. 2021 [cited 2025 Jan 29]. Available from: <https://edurank.org/environmental-science/us/>
2. EduRank. Europe's best Environmental Science universities [Rankings] [Internet]. EduRank.org - Discover university rankings by location. 2021 [cited 2025 Jan 29]. Available from: <https://edurank.org/environmental-science/eu/>
3. United Nations. The 17 sustainable development goals [Internet]. United Nations. 2025. Available from: <https://sdgs.un.org/goals>





## CABI Global Health, more than just a database: a fresh perspective on global literature with a not-for-profit impact

Jesslyn Thay

CABI, Wallingford, United Kingdom

### Abstract

*CABI Global Health is a specialized bibliographic database for public health research, developed by CABI, a not-for-profit organization addressing global health challenges. It contains nearly 5 million curated records from peer-reviewed journals, grey literature, and multidisciplinary sources, offering comprehensive coverage of public health issues worldwide. Beyond traditional medical disciplines, it integrates One Health, environmental health, nutrition, and zoonotic diseases, emphasising the interconnectedness of human, animal, and environmental health. The database's indexing system, including the CABI Thesaurus and CABICodes, ensures precise literature retrieval. Committed to global knowledge representation, CABI actively indexes research from underrepresented regions, particularly low- and middle-income countries. Available via the CABI Digital Library, EBSCO, Web of Science, and Ovid, CABI Global Health is a vital resource for researchers, policymakers, and practitioners engaged in evidence-based public health decision-making.*

**Key words:** public health; One Health; databases, bibliographic; review.

CABI Global Health is a specialist public health database, produced by not-for-profit CABI, with nearly 5 million records handpicked from leading international multidisciplinary titles, in addition to core public health journals and grey literature, giving users a comprehensive view of international public health at local, national, and regional levels.

CABI is an international not-for-profit organisation founded in 1910, dedicated to addressing global challenges in agriculture, the environment, and public health. CABI's main driver is to provide knowledge, tools, and sustainable solutions to improve lives, empower women and youth, combat climate change, protect biodiversity, and strengthen food security.

Through its partnership of 48 member countries CABI reinvests its revenue into projects that make a real difference, particularly in low- and middle-income countries. Every CABI project is designed to empower communities, using evidence, knowledge and research to drive long-term positive change, with a strong com-

mitment to the UN Sustainable Development Goals (SDGs).

Through publishing, research, and development work, CABI continues to provide essential data and practical solutions to improve health outcomes, control disease spread, and support healthier, more resilient communities.

### CABI Global Health: your key to comprehensive Public Health research

Since the creation of the database in 1995, CABI Global Health has been regarded as a leading resource for researchers, policymakers, and public health professionals worldwide, offering access to over 4.7 million health literature records spanning from the early 1900s to the present day.

For over 30 years the CABI Global Health database has hand-selected relevant content from a wide array of subjects beyond conventional medical health topics, including cross over content from One Health, the en-

---

Address for correspondence: Jesslyn Thay, CABI Nosworthy Way, Wallingford, Oxfordshire, UK OX10 8DE, United Kingdom. E-mail: [j.thay@cabi.org](mailto:j.thay@cabi.org)

## CABI Global Health: a not-for-profit public health database

vironment, food science, agriculture and plant science, and veterinary health, allowing users to have a truly comprehensive view of global public health challenges. Exploring non-traditional sources is crucial for a complete picture and acknowledging that valuable lessons can be learned from around the world. This is where CABI Global Health differs from competitors and enables users to have a broader global perspective, incorporating knowledge from diverse regions and multiple disciplines from our global scope of serials published in over 110 countries and 50 different languages.

In addition, we acknowledge that many critical insights are found in local studies, policy reports, and other grey literature that may not be indexed in mainstream databases but is indexed CABI Global Health and easily findable with our world-class controlled vocabulary.

### Unique insights, unmatched coverage

While CABI Global Health is primarily a public health database containing all the core aspects of health literature, the database has unique content on medical entomology, vector borne disease and zoonoses, key literature in a world rapidly impacted by climate change (Figure 1). Further strengths lie in our nutrition coverage; to get a healthy population you must eat nutritionally valuable food, from field to fork our coverage on nutrition is world class.

CABI Global Health's environmental health coverage is exemplary, with the ability to find all subject-relevant journal sources in one place, with historical literature from the turn of the century around sanitation and hygiene, this is supplemented by our inclusive coverage on water and wastes. Our unique history and perspective bring users crucial information valuable for comprehensive evidence synthesis on a multitude of topics. In a 2023 comparison with PubMed, out of 7754 titles, almost half (47%) were unique to CABI, including African Journal of Clinical and Experimental Microbiology, CABI One Health and Chinese Journal of Food Hygiene. Furthermore, 74% of 7400+ titles indexed on CABI Global Health in 2024, were not found on MEDLINE's title list.

### Global Health Archive: incorporating a legacy to help shape the future

Our vast collection of literature enables users to explore a wealth of modern health and multidisciplinary records yet also search important and valuable historical public health literature, including journals from the Bureau of Hygiene and Tropical Diseases, originally founded in 1908, and which became incorporated into CABI in 1993, strengthening CABI's commitment to public health. Its journals included the *Tropical Diseases Bulletin*, first published in 1912, and

Health and Disease	Infectious Diseases and Epidemiology	Biomedical Sciences and Therapeutics	Public Health Systems and Policy	Environmental and Occupational Health	Nutrition and Food Security	Health Promotion and Disease Prevention
Ageing	Bacterial and Viral diseases	Diagnosis and Therapy of Disease	Public Health Emergencies	One Health & Environmental Interactions	Public health Nutrition	Social Determinants and Health Inequality
Chronic Diseases	Tropical and International Health	Pharmacology & Toxicology	Health Education	Environmental Health and Climate Impact	Food Security	Public Health
Mental Health	Zoonotic and Emerging Diseases	Traditional Medicine & Integrative Health	Health Policy & Planning	Occupational Health and Safety	Food Science	Health Promotion and Wellness
Women's Health	Infectious and Vector-borne Diseases		Health Economics	Sanitation, Water, and Hygiene	Clinical Nutrition & Deficiencies	Community Health
Maternal & Child Health	Medical Entomology and Mycology		Healthcare Services	Disaster Health Management		Health behaviours and beliefs
Sexual and Reproductive Health	Medical Microbiology		Population Health and Social Medicine			
Migrant Health	Nosocomial Infections					
	Parasitology					

Fig. 1. The breadth of subject scope of indexed records found in CABI Global Health (2025).

Abstracts on Hygiene and Communicable Diseases, first published in 1926, which CABI digitised, and which can now be accessed online as part of the Global Health Archive.

The Global Health Archive includes records from the 1900s onwards, including community health records and some of the first reports of neglected tropical disease cases. This unique treasure trove of historical literature includes titles such as *Sleeping Sickness Bulletin* which can be accessed as Full-Text content and is not available digitally anywhere else.

The CABI Global Health database and the Archive allow users to explore past research to better understand how historical events, behaviours and practices have influenced current global health issues, while learning from the past can help us make more informed better strategies for current and future health challenges.

### Balancing act: ensuring quality while increasing global representation

The CABI Global Health Database carefully selects and indexes relevant content from over 7,500 accepted journals, with the number growing daily (*Figure 2*). New journal titles are assessed based on strict selection criteria, particularly for open-access titles, following DOAJ guidelines and OASPA membership standards. Journals must adhere to COPE ethics, WAME principles, and a rigorous peer review process. Editors are vigilant over quality, working to identify and exclude predatory journals, paper mills, and hijacked titles. (CABI Digital Library 2024 <https://www.cabidigitallibrary.org/databases/review-process>).

Key considerations for journal selection include the

uniqueness of subject content, particularly if the journal covers topics not well represented in existing literature, multi-disciplinary journals may be reviewed by multiple subject experts to ensure relevance.

Additionally, journals offering valuable regional content, especially those underrepresented in established literature, are given special consideration. These factors ensure that the CABI Global Health database remains a high-quality, authoritative resource for researchers and academics.

This also means that publications that do not match CABI's editorial standards for inclusion also need to be rejected from time to time. Rejections are handled case by case, with the journal's editors given advice and feedback on how to improve their internal standards. Publishers are also encouraged to apply for indexing again when CABI's criteria for inclusion have been met satisfactorily.

### From data to discovery: how CABI Global Health supports research

On CABI's own CABI Digital Library (CDL) platform exploring our designated Smart Searches enables users to drill down into subjects using our controlled vocabulary in pre-made searches. These strings can be combined with each other, with limiting factors or one's own search strategy as building blocks. CABI Global Health has 30 Smart Searches across varied health topics such as *Pollution*, *Obesity* and *Drug resistance*.

On CDL there is an ability to filter results to "Grey literature" or "Evidence based research" using our Filter feature, the searches behind the buttons were curated by a team of external experts and subject specialists. (*Figure 3*) Current developments are to ex-

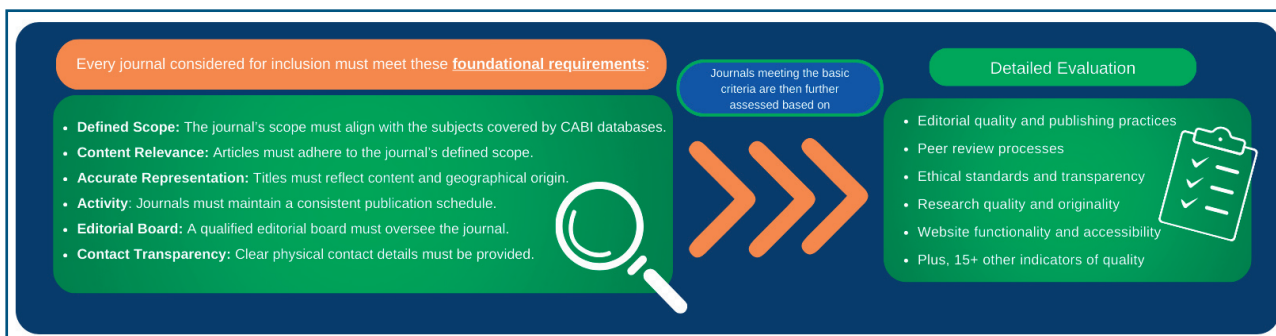


Fig. 2. Brief outline of processes for journal selection for indexing in CABI products.

## CABI Global Health: a not-for-profit public health database

pand filters around evidence types to allow users to focus deeply on areas and types of literature of interest.

CABI Global Health on the CDL benefits from extensive features enabling efficient search retrieval and data export. Searches can be saved in users own collections, as well as being retrievable at any time, they are also easy to edit. Guidance is available in the form of a comprehensive and straightforward helpfile.

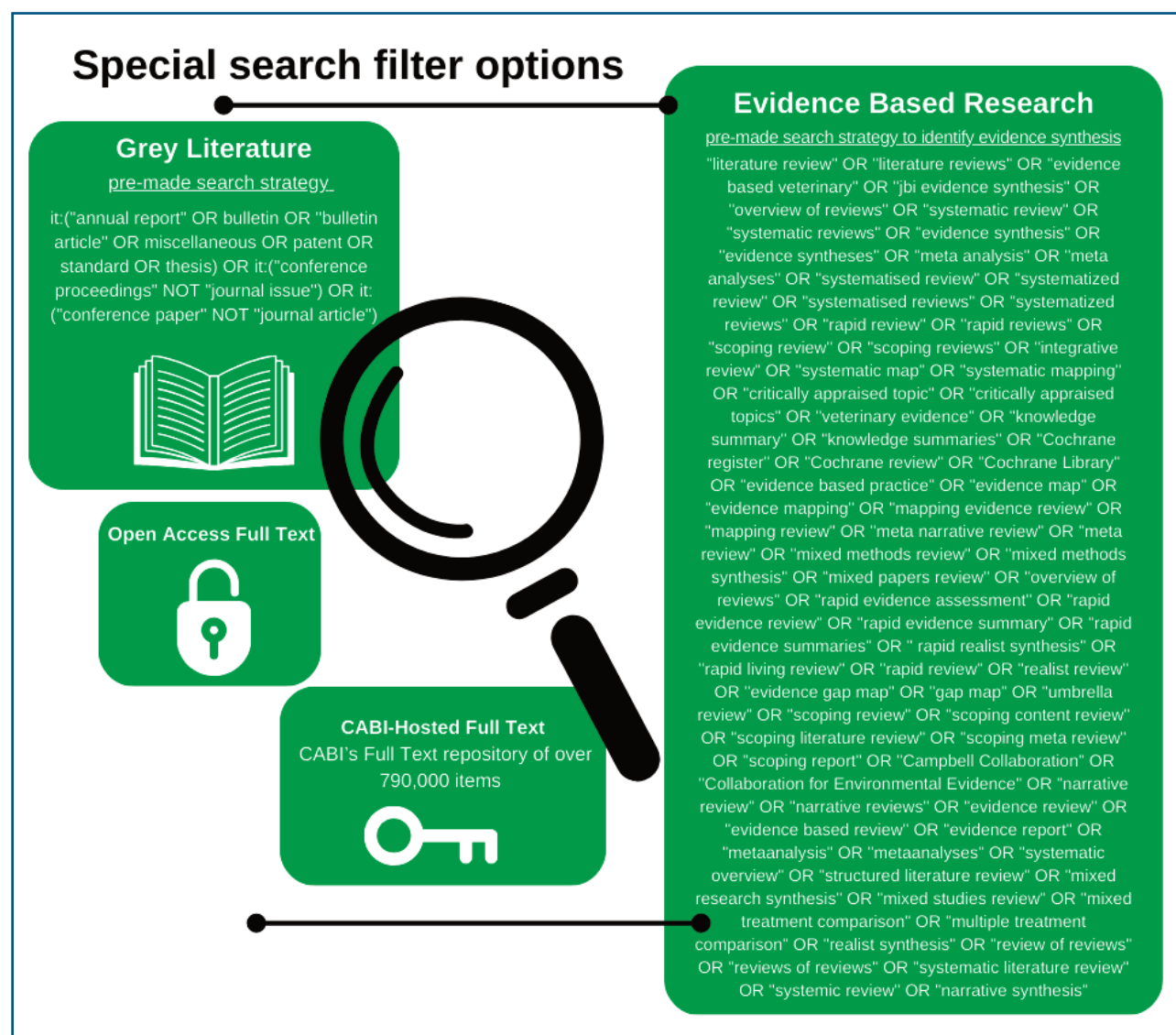
CABI's Full Text repository of over 790,000 items and growing, including many human health articles, is made possible by agreement with third party contributors, and has been specially digitised and indexed by

CABI. A significant percentage of the content is not reliably available anywhere else.

### One-of-a-kind indexing: using CABI Thesaurus and CABICodes

CABI Thesaurus is CABI's controlled vocabulary, which every record is indexed using, and is designed to facilitate precise and structured searching of life sciences literature. Unique to us the thesaurus includes a vast array of public health terms with similarities to MeSH but with a broader focus on life sciences, animal sciences, food production and agriculture.

CABI Thesaurus has half a million entries and covers



**Fig. 3.** CDL special search filter options. To see more follow helpfile link at <https://help.cabi.org/cabi-digital-library-help/search/special-search-filter-options#cabi-hosted-full-text>.



organism names, disease states, and geographical locations, encompassing over 189,000 terms and more than 300,000 relationships between them, in addition to offering translations across 11 languages for up to 27,000 concepts.

A new tool has been introduced to improve usability of CABI Thesaurus, with interactive visualization and search building abilities.

Ongoing projects aim to enhance the representation of public health terms and integrate MeSH data to bridge terminology gaps, where applicable, making it easier than ever for systematic reviewers to translate search strategies and strings between databases.

Another completely unique feature to CABI Global Health over other A&I databases are CABIcodes. A classification system of topic codes assigned to broad subject areas, enabling comprehensive subject searches and refined indexing.

The CABIcode system consists of 25 major subject areas, with coverage of all life science disciplines. Under the Human Health category (VV000), there are 24 specialized CABIcodes that focus on specific aspects of health research. Examples include: VV550 for Rural Health, VV210 for Infectious Diseases, and VV100 for Human Nutrition. CABIcodes can be combined with each other to build complex and comprehensive searches and underpin many Smart Searches and “*browse by topic*”.

### **Looking ahead: commitment to decolonising health literature**

As CABI Global Health looks to the future, a key focus is on CABI's commitment to decolonise health literature and provide equal representation for all health literature. This involves ensuring that scientific contributions from all regions of the world, particularly from low- and middle-income countries, are fairly represented.

Editors at CABI are committed to ensuring that high-quality research from underrepresented regions is indexed in CABI Global Health, using internationally recognised selection criteria. CABI has a strength in sourcing literature written in local language in addition to studies conducted in source countries and written by native academics.

Of the 7000+ indexed titles, 2373 are published in the Global South, including BRIC countries. While maintaining a focus on high-quality science, we are looking

to also increase our content from North and Sub-Saharan Africa, in addition to increasing representation from Latin America and Pan American nations and providing access to more literature from across Central Asia.

### **Beyond journals: exploring grey literature for a complete picture**

CABI Global Health is committed to ensuring that grey literature, which includes important research outputs such as reports, policy documents, conference papers, book chapters, protocols, briefings, guidelines, and situational data, is widely accessible alongside traditional academic publications.

CABI editorial team recognise the value of these often overlooked resources and actively sources and identifies additional content, enhancing the database collection to provide a more comprehensive view of health challenges worldwide. There are currently over 113,700 grey literature articles sourced and indexed from key health organisations and globally recognised institutes.

### **How to access CABI Global Health, CDL and other platforms**

CABI Global Health is available directly on CABI's own platform CABI Digital Library (CDL). Here users can benefit from using the curated search filters and Smart searches, as well as Full Text PDF links and other intuitive advanced user features like ‘search alerts’, account search history and sharing projects.

CDL functionality also caters to expert users with the ability to curate searches of up to 64,000 characters in both Advanced Search and the main keyword search. Users who are working in evidence can easily export their own selected records or up to 100,000 search results in one go (either as .ris, .csv, Text, bibText, or EndNote.)

Furthermore, CABI Global Health is also available on EBSCO, Web of Science Collections and Ovid platforms. Unique features like CABI Thesaurus and CABIcodes can still be utilised on third party platforms.

### **CABI Global Health: striving to empower future generations**

Since formation in 1995 CABI Global Health remains committed to advancing its mission of providing high-

quality, inclusive, and accessible health information. We are constantly working to improve CABI Global Health, from frequently assessing scope and coverage, to ensuring journals are of repute before indexing, as well as expanding the controlled vocabulary and enhancing functionality of the database.

CABI Global Health will continue to be a key resource for librarians, providing researchers, students, and practitioners with essential health literature. By advancing access to knowledge and supporting evidence-based decision-making, CABI Global Health will help equip future generations to tackle our ever-changing world's global health challenges. So here is to the next 30 years of CABI Global Health.

*Submitted on invitation.  
Accepted on 13 March 2025.*

### SUGGESTED REFERENCES AND LINKS TO RESOURCES

1. <https://www.cabi.org/> [Accessed: 25/02/2025]
2. Blight D. CABI: A century of scientific endeavour. Wallingford, UK: CABI; 2011. Available from: <https://www.cabi.org/wp-content/uploads/100-Year-Book.pdf> [Accessed: 25/02/2025].
3. Snell K. The importance of CABI's Journal Selection Process for Abstracting and Indexing Databases. CABI; 2025. Available from: <https://www.cabidigitallibrary.org/do/10.5555/blog-selection-database-process> [Accessed: 25/02/2025].
4. Thay J. Decolonizing health literature – libraries are leading the way. CABI; 2024. Available from: <https://www.cabidigitallibrary.org/do/10.5555/blog-decolonizing-health-literature> [Accessed: 25/02/2025].
5. CABI codes helpfile: <https://help.cabi.org/cabi-digital-library-help/search/cabi-codes-cabi-subject-classification-codes> [Accessed: 25/02/2025]\*
6. CABI Global Health on the CDL: <https://www.cabidigitallibrary.org/product/he> [Accessed: 25/02/2025]\*
7. CDL helpfile: <https://help.cabi.org/cabi-digital-library-help> [Accessed: 25/02/2025]\*
8. Special search filter options helpfile: <https://help.cabi.org/cabi-digital-library-help/search/special-search-filter-options> [Accessed: 25/02/2025]\*

\*Need to be a CABI subscriber to access





# Identifying resources to support searching for One Health and Planetary Health topics, with a focus on grey literature

**Fiona J.L. Brown**

Library & University Collections, The University of Edinburgh,  
Edinburgh, Scotland, United Kingdom

### Abstract

*We report briefly on the establishment of the Global Academy of Agriculture and Food Systems (GAAFS), a new interdisciplinary research group at the University of Edinburgh and how this required the library to identify and learn about additional search resources on top of those within our usual repertoire. We share examples of some of the resources which were found to be most useful for One Health and Planetary Health.*

**Key words:** *grey literature; One Health; information literacy; information sources.*

### Background

In 2016 the University of Edinburgh launched the Global Academy of Agriculture and Food Systems (GAAFS), based within the University's Royal (Dick) School of Veterinary Studies. GAAFS launched as an "interdisciplinary hub of researchers, teachers and students; developing new science, curating evidence and learning on the intersection and interdependence of the systems that underpin the health and wellbeing of people and our planet" (1). Its vision is "Healthy people and a healthy planet, through regenerative and ethical food and land use systems" (1).

As GAAFS grew, the number of people involved increased to over 30 staff, and over 40 PhD students. GAAFS staff design and deliver Masters programmes, continuous professional development programmes and a MOOC (massive open online course) in Sustainable Global Food Systems. GAAFS staff have also developed undergraduate interdisciplinary courses, taken by students in other parts of the University of Edinburgh. The academy is multi-disciplinary and has staff with expertise in subject areas such as agricultural systems, land use, climate change, data science, international law, international development, policy and governance, and behaviour change, as well as more familiar areas such as animal science, livestock systems and veterinary public health.

Library support for GAAFS is provided by the Lady Smith of Kelvin Veterinary Library within the University's Royal (Dick) School of Veterinary Studies. In supporting GAAFS staff and students Library staff have had to learn about new or less familiar search resources.

Here I would like to share examples of some of the resources which we as Library staff have found to be most useful.

### Identifying search resources

#### Databases

Many of the databases we already used, such as Web of Science, Scopus and MEDLINE are useful for GAAFS staff and students, but we needed to familiarise ourselves with databases covering agricultural and planetary health. We had used CAB Abstracts and CABI Global Health for veterinary topics and knew these to be excellent for agricultural and planetary health also. To identify other suitable databases, we looked at the library subject pages of other universities, which we suspect is something many of us do when looking for information!

#### Grey literature

There can be different definitions of grey literature, however at the Third International Conference on

---

*Address for correspondence:* Fiona J.L. Brown, Library & University Collections, Royal (Dick) School of Veterinary Studies, University of Edinburgh, Easter Bush, Midlothian EH25 9RG, Scotland, United Kingdom. E-mail: f.brown@ed.ac.uk

Grey Literature, held in 1997 the following definition was agreed “information produced on all levels of government, academia, business and industry in electronic and print formats not controlled by commercial publishing i.e., where publishing is not the primary activity of the producing body” (2).

We were already aware of the importance of grey literature for some aspects of veterinary information and saw this as being valuable for GAAFS staff and students also, especially given the international aspect of their research. In the 1970s, researchers from the University of Edinburgh’s Centre for Tropical Veterinary Medicine highlighted the importance of dissemination of their research to researchers and extension services in “their own geographic situations” and they did this by providing the information in, for example, booklets provided to extension services, such as in country collaborative advisory organisations (3). More recently, a *Nature* news item in 2021 highlighted a paper which showed that researchers in the global south are under-represented in development research (4, 5).

For researchers who are looking to be as inclusive as possible in their literature searches, and who wish to include more material from the Global South, it is, therefore, recommended to search grey literature databases and search resources as well as the more familiar bibliographic databases (6-8). Doing so should assist them to discover more research reports and policy documents, for example, which other bibliographic databases may not include. Many current systematic reviews in Planetary Health include grey literature in their protocols (9).

We were aware that CAB Abstracts and CABI Global Health indexed grey literature, however, we recognised that there would be other resources which we should use.

In March 2023 John Barbrook, Faculty Librarian for Science and Technology, Health and Medicine at Lancaster University gave a talk on “Decolonising Grey Literature”, as part of their “Systematic Review Conversations”. He spoke about Overton and Policy Commons as excellent resources for searching international grey literature (10). These are resources which several of our researchers have found very useful.

Other relevant resources were identified during discussions with the researchers. Researchers are often already familiar with many of the organisational and institutional websites and repositories in their area of

expertise. As we learned more about the research topics of the GAAFS researchers, we continued to learn about new search resources also.

### Some suggested search resources

These are some of the resources which we have found useful. While this is not intended to be an exhaustive list, it may be a useful starting point to others new to Planetary Health and One Health.

#### **AgEcon Search**

(<https://ageconsearch.umn.edu/>)

Access information: freely available.

Description: “AgEcon Search: Research in Agricultural and Applied Economics” is a subject repository which collects and indexes research in agricultural and applied economics, including sub-disciplines such as agribusiness, food security and supply, energy and natural resource economics, environmental economics, policy issues, international trade, and economic development. Content includes conference presentations, working papers, journal articles, government documents, and theses and dissertations.

#### **AgriKnowledge**

(<https://gatesopenresearch.org/gateways/agriknowledge>)

Access information: freely available.

Description: AgriKnowledge provides access to key information for agricultural development. These documents have been produced in conjunction with the Bill & Melinda Gates Foundation, the Alliance for a Green Revolution in Africa, and the Ethiopian Agricultural Transformation Agency.

#### **agriRxiv**

(<https://agrxiv.org/>)

Access information: freely available.

Description: open access, searchable, full-text repository of author-submitted unpublished preprints across the agricultural sciences, including agribusiness, aquaculture, crop science, environmental science, forestry, plant science, livestock science, soil science.

#### **AGRIS**

(<https://agris.fao.org/>)

Access information: freely available.

Description: the International System for Agricultural Science and Technology (AGRIS) is produced by the

Food and Agriculture Organization of the United Nations (FAO). AGRIS is one of the most comprehensive search engines in food and agricultural scientific literature providing free access to millions of bibliographic records in 90 different languages. AGRIS indexes books, journal articles, monographs, book chapters, datasets and grey literature – including unpublished scientific and technical reports, theses, dissertations and conference papers in the area of food and agriculture.

### **CAB Abstracts**

(various platforms including CABI Digital Library: <https://www.cabidigitallibrary.org/product/ca>)

Access information: subscription.

Description: agriculture database, with excellent veterinary coverage. Indexes journal articles, books and book chapters, conferences, reports and grey literature. Includes over 670,000 full text articles, 80% of which are not available online elsewhere. Covers research and development literature in the fields of animal and crop husbandry, animal and plant breeding, plant protection, genetics, forestry, veterinary medicine, aspects of human health, human nutrition, rural development, leisure and tourism and management and conservation of natural resources.

### **CGSpace**

(<https://cgspace.cgiar.org/home>)

Access information: freely available.

Description: CGSpace is a repository of CGIAR and partner research outputs and knowledge products. The repository has information on reports, articles, press releases, presentations, videos, policy briefs, datasets, infographics and more. CGIAR was formerly the Consultative Group for International Agricultural Research. It includes organisations such as the International Food Policy Research Institute, the International Institute of Tropical Agriculture and the International Livestock Research Institute.

### **EMBRAPA - The Brazilian Agricultural Research Corporation**

(<https://www.embrapa.br/en/library>)

Access information: freely available.

Description: the Brazilian Agricultural Research Corporation (EMBRAPA) is a large agricultural research organisation, working on innovation, efficiency, sustainability and social inclusion.

### **EMPRES-I**

(<https://empres-i.apps.fao.org/general>)

Access information: freely available.

Description: EMPRES Global Animal Disease Information System (EMPRES-i) is a web-based application that has been designed to support veterinary services by facilitating the organisation and access to regional and global disease information. Includes emergent zoonoses, and supports prevention, improved management and progressive approach to control.

### **FAO Knowledge Repository**

(<https://openknowledge.fao.org/home>)

Access information: freely available.

Description: the FAO Knowledge Repository is FAO's official open repository, providing access to all of its publications. Through its open access policy, FAO seeks to increase the dissemination of its knowledge and to contribute to the scientific and technical impact of the Organization. The FAO Knowledge Repository contains tens of thousands of publications; annual reports; technical papers; policy briefs; advocacy documents; project reports; meeting documents; grey literature; and other information and communication material. It is worth noting that the FAO resource Access to Global Online Research in Agriculture (AGORA) provides access to journals, e-books, and other information resources covering agriculture and related topics to public institutions in low-income countries <https://www.fao.org/agora/>.

### **FAOLEX Database**

(<https://www.fao.org/faolex/en/>)

Access information: freely available.

Description: FAOLEX is a database of national legislation, policies and bilateral agreements on food, agriculture and natural resources management. It contains legal and policy documents drawn from more than 200 countries, territories and regional economic integration organisations in over 40 languages.

### **Overton**

(<https://www.overton.io/>)

Access information: subscription.

Description: Overton is a large searchable index of policy documents, guidelines, think tank publications and working papers from sources that are typically difficult to find in one place. Documents are parsed to find ref-

ferences, people and key concepts in relevant news stories, academic research, think tank output and other policy literature. Full-text indexing can lead to discovery of additional citations. Overton includes over 18 million full-text policy documents and grey literature from 44,000 organisations in 188 countries.

### **Policy Commons**

(<https://policycommons.net>)

Access information: subscription, with some content freely available.

Description: Policy Commons provides access to over 17 million books, articles, working papers, reports, policy briefs, data sets, tables, charts, media, case studies, and statistical publications from over 40,000 organisations. The search interface enables searching for tables within reports.

### **World Organisation for Animal Health, OIE**

(<https://doc.woah.org/>)

Access information: freely available.

Description: institutional repository of publications, communications and work produced by WOA. Most is open access.

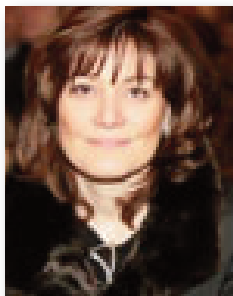
*Submitted on invitation.*

*Accepted on 17 March 2025.*

## REFERENCES

1. The University of Edinburgh, Global Academy of Agriculture and Food Systems. About the Global Academy of Agriculture and Food Systems. Edinburgh: The University of Edinburgh; 2024. Available from: <https://vet.ed.ac.uk/global-agriculture-food-systems/about>
2. Farace DJ. Foreward. Third international Conference on Grey Literature: Perspectives on the Design and Transfer of Scientific and Technical Information. 13-14 November 1997; Amsterdam, Luxembourg; Transatlantic DF; 1998.
3. Pearson RA, Lawrence PR, Smith AJ. The Centre for Tropical Veterinary Medicine (CTVM) pulling its weight in the field of draught animal research. *Trop Anim Health Prod.* 1996 Mar; 28(1):49-59. Available from: <https://doi.org/10.1007/BF02250727>
4. Liverpool L. News in Brief - Researchers from global South under-represented in development research. *Nature.* 2021 Sep 21; 597(7878):599. Available from: <https://doi.org/10.1038/d41586-021-02549-9>
5. Amarante V, Burger R, Chelwa G, Cockburn J, Kasouf A, McKay A, Zurbrigg J. Underrepresentation of developing country researchers in development research. *Appl Econ Lett.* 2022 Oct; 29(17):1659-64. Available from: <https://doi.org/10.1080/13504851.2021.1965528>
6. Lefebvre C, Glanville J, Briscoe S, Littlewood A, Marshall C, Metzendorf M. Searching for and selecting studies. In: Higgins J, Chandler J, Cumpston M, Li T, editors. *Cochrane Handbook for Systematic Reviews of Interventions.* London: Cochrane; 2020.
7. Paez A. Gray literature: An important resource in systematic reviews. *J Evid Based Med.* 2017 Aug; 10(3):233-40. Available from: <https://doi.org/10.1111/jebm.12266>
8. Mahood Q, Van Eerd D, Irvin E. Searching for grey literature for systematic reviews: challenges and benefits. *Res Synth Methods.* 2014 Sep; 5(3):221-34. Available from: <https://doi.org/10.1002/jrsm.1106>
9. Mulopo C, Abimbola S, Onkoba N, Schmidt B-M. A planetary health perspective on the translation of climate change research into public health policy and practice: A scoping review protocol. *PLOS ONE.* 2024;19(3):e0295931. Available from: <https://doi.org/10.1371/journal.pone.0295931>
10. Barbrook J. Systematic review conversations series: decolonising of grey literature with John Barbrook [Internet]. Lancaster: Lancaster University Library; 2023 Mar 13 [cited 2025 Feb 28]. Video: 61 min. Available from: <https://youtu.be/eVDYPoDE9Q8?feature=shared>

### Letter from the President



**Francesca Gualtieri**

Library and Archives Rottapharm Biotech SpA, Monza, Italy  
francesca.gualtieri@rottapharmbiotech.com

Dear EAHIL Colleagues,

this is my first letter to you, and I would like to express my heartfelt thanks for the trust you have placed in me through the recent election. It is an honour to serve as EAHIL President, and I look forward to working with you all to further our mission of advancing health information and library services across Europe.

I am pleased to introduce our new Board Members (2025-2028):

- Alicia Fátima Gómez Sánchez – Vice-President (Spain)
- Marion Heymans – Treasurer (Netherlands)
- Katri Larmo – Secretary (Finland)
- Mala Mann – Communication Officer (UK)
- Güssün Güneş – Scholarships and Sponsorship Officer (Türkiye)
- Valeria Scotti – Deputy System Admin. and Communication Officer (Italy)
- Aoife Lawton – Deputy Vice-President Officer co-opted (Ireland)
- Witold Kozakiewicz – System Administrator, co-opted (Poland)
- Maurella Della Seta – Co-opted Past President (Italy)
- Federica Napolitani – JEAHIL Editor-in-Chief (Italy)

For more information: [EAHIL Executive Board](#)

Board Members bring a wealth of expertise and passion for the future of EAHIL. Together, we will strive to enhance our association's impact and ensure that we remain at the forefront of developments in health information management and library science.

Please join me in extending a warm welcome to our new Council Members. They will play an essential role in connecting us with new members, including those engaging with EAHIL for the very first time. Your fresh perspectives and energy are invaluable to our community, and we are excited to collaborate with you as we continue to grow and evolve.

I would also like to emphasize the vital role of EAHIL's ongoing collaborations with other organizations. We are fortunate to be part of a dynamic network that fosters partnerships and knowledge exchange while strengthening the impact of our collective work. I am particularly excited to announce our growing collaborations with institutions worldwide. These alliances will further enrich the EAHIL community, bring innovative opportunities, and amplify our shared efforts in advancing health information and library services.

As our first task, we have decided to move our Listserv mailing server to Poland. I would like to thank you for your patience during this process. We will resolve all technical issues as soon as the migration is complete. I hope your experience with the MyClub database has been positive. Additionally, we need to update and refresh our website, and we are still looking for your collaboration and expertise.

I encourage you to contribute to the EAHIL Journal by sharing your research findings. Please submit your paper [online](#) or contact the Editor in Chief Federica Napolitani (federica.napolitani@iss.it) or one of the members of JEAHIL Editorial Board.

Looking ahead to the next two years, I hope to see as many of you as possible in Łódź (Poland) next June and in Antalya (Türkiye) in 2026.

With warm regards,

*Francesca Gualtieri*



## PUBLICATIONS AND NEW PRODUCTS

---



### Publications and new products

**Annarita Barbaro**

Istituto Superiore di Sanità, Rome, Italy

annarita.barbaro@iss.it

Dear all,

welcome back to my column! For this issue's "Publications and new products" column I've searched the web and selected news and articles on the most discussed trends related to biomedical librarianship. Once again, it's Artificial Intelligence, Diamond Open Access and Open Science. Among the reading suggestions is a paper by Galli, Moretti, and Calciolari which discusses the case for biomedical literature reviews, arguing that AI summaries may soon reach a point where they are equivalent to current reviews of the literature, possibly making them irrelevant. The paper poses a question that I would like to pose to you too: whether "the availability of automated summaries of the literature may raise the bar of what is still worth publishing".

#### JOURNAL ISSUES

*Health Information and Libraries Journal* contents of March 2025 (42:1)

#### Editorial

- **CILIP Health Libraries Group: the power of networks.**  
Hong-Anh Nguyen and Paul Cannon

#### Review

- **Government document citations in top nursing journals: A bibliometric analysis.**  
Andrew Dudash, Stephen Woods and Kathleen Phillips

#### Original Articles

- **Evaluation of the usefulness and understandability of information leaflets on fall prevention from the perspective of hospital patients and their relatives.**  
Eva Pock, Christa Lohrmann, Magdalena Hoffmann, Christine Schwarz and Daniela Schoberer
- **Health information and resources in hospital outpatient waiting areas may not meet needs of older adults from culturally and linguistically diverse backgrounds: A cross-cultural qualitative study.**  
Cassie McDonald, Catherine L. Granger, Julie Louie, Thy Tran and Louisa J. Remedios
- **Health information seeking behaviour and decision making by patients undergoing breast cancer surgery: a qualitative study.**  
Octavia-Luciana Madge, Augustin Marian Marinca, Claudiu Daha and Lauren Iu Simion
- **Unravelling moderated mediating effects of loss aversion, information avoidance and self-efficacy on cancer fear and cancer screening.**  
Jocelin Lam and Sapphire Lin

- **Gaze movement analysis examined how people view and interact with health information on Facebook pages.**  
Sue Yeon Syn
- **The popularization of self-care: Tracing the dissemination of Orem's self-care deficiency nursing theory into the scientific disciplines.**  
Kemal Yayla, Medine Yilmaz and Hatice Yildirim Sari
- **Misinformation and perception of Covid-19 and risk assessment among people in Pakistan: a pilot study.**  
Saima Eman, Ravi Jha, Muhammad Safdar, Mayank Singh, Priyanka Patel and Ume Javeria

### Regular Features

#### *AI and New Technologies*

- **Introducing a new Regular Feature: AI and New Technologies.**  
Veronica Parisi

#### *Practice Based Studies*

- **Leveraging the environmental health literacy framework for effective assessment and practice in the era of climate change crisis.**  
Mi Yan, Taizhao Yan and Salman Bin Naeem

#### *Teaching and Learning in Action*

- **Collaborative partnerships to improve E-Learning design: Enhancing information skills training for the healthcare workforce.**  
Alison Day, Alison Potter, Dominic Gilroy, Sarah Lewis and Gil Young

### FROM THE WEB

- **New ERC guide on trusted repositories: Promoting open science and meeting grant requirements**  
The European Research Council published an update [guide](#) offering a comprehensive insight into trusted repositories, helping EU-funded researchers to comply with Horizon Europe's Open Science requirements. In this study, 241 repositories were analysed, and 186 repositories were identified as trusted. The guide is intended as a resource for researchers, research institutions, and repository managers to assess which repositories are suitable for their needs and can facilitate compliance with the Horizon Europe Model Grant Agreement (MGA) requirements. The study updates a previously published one and is based on a new methodology, presenting a new classification. The study classifies repositories into four categories: Exemplary, Essential, Close to Essential, and Data Inconclusive.
- **The future of Creative Commons**  
Creators of the Creative Commons (CC) have recognised that the world has changed a lot since CC founding in 2001: information is more accessible than it has ever been, but there are increasing concentrations of power online, and this monopolization of knowledge is amplified exponentially through technology such as artificial intelligence (AI). To respond to that, Creative Commons built a 2025–2028

## PUBLICATIONS AND NEW PRODUCTS

---

strategic plan focusing on three primary goals: strengthen the open infrastructure of sharing; defend and advocate for a thriving creative commons; and center community involvement. The plan's goal is to ensure resilient open sharing systems, promote equitable access to knowledge, and empower communities to collaboratively address global challenges.

- **The European Diamond Capacity Hub (EDCH)**

This new initiative aims to advance Diamond Open Access publishing across Europe by providing six essential services, including a registry and forum, self-assessment tools, the Diamond Discovery Hub, resources and guidelines, a training platform, and publishing tools, all designed to support publishing service and technology providers. OPERAS will act as EDCH's fiscal host.

<https://operas.hypotheses.org/8582>

- **The EC Library Guide on open science, open access and open data**

The European Commission has compiled a selection of information resources on open science, open access and open data. This Library Guide presents a curated selection of relevant sources on the topic: EU websites, EU publications, EU law, international publications, specialist search tools, databases and repositories. This Library Guide has been created to support the work of the European Commission, but it may also be of interest to students, researchers and the wider public.

### READING SUGGESTIONS

- Glynn A.  Suspected Undeclared Use of Artificial Intelligence in the Academic Literature: An Analysis of the Academ-AI Dataset, arXiv:2411.15218
- Galli C, Moretti C, Calciolari E.  Intelligent summaries: Will Artificial Intelligence mark the finale for biomedical literature reviews?   *Learned Publishing*  e1648
- Elbakyan, A.  From Black Open Access to Open Access of Color: Accepting the Diversity of Approaches towards Free Science. Preprints 2024, 2024090197
- Balnaves, Edmund, Bultrini, Leda, Cox, Andrew and Uzwyshyn, Raymond.  New Horizons in Artificial Intelligence in Libraries. Berlin, Boston: De Gruyter Saur, 2025
- Nogueira LA, Hegle J, Aronsen K, Kalkvik SS, Gaustad L, and Rein JO. (2024).  Artificial intelligence, real library: Final report for Project Laibro. NTNU Library. <https://hdl.handle.net/11250/3165570>

### SOME FORTHCOMING EVENTS

#### **Workshop on Open Citations and Open Scholarly Metadata 2025**

**May 28-29, Bologna, Italy**

The main theme of the workshop is "Open Access of Research Information". The workshop is intended for researchers, scholarly publishers, funders, policy makers, institutions, and open citations advocates, interested in the widespread adoption of practises for creation, sharing, reuse and improvement of open scholarly metadata. More info at: <https://workshop-oc.github.io/>

#### **DIAMAS Conference**

**June 3, Brussels, Belgium**

The one-day event will review the main achievements of the DIAMAS project, cover the state of Diamond OA, and look ahead to how the European Diamond Capacity Hub will support and promote Diamond publishing. The conference will also showcase how DIAMAS outputs have been used in practice. As I write, details of how to register and take part have not yet been published.

### **MLA '25 is the annual conference of the Medical Library Association (MLA)**

**April 29 – May 2, Pittsburgh, Pennsylvania, USA**

More details at: <https://www.mlanet.org/meetings-events/mla2025/>

### **EAHIL workshop 2025**

**June 9-13, Lodz, Poland**

The theme of the workshop is “IMAGINE”, a word formed by the initial letters of the concepts that will be the motto of the planned workshops: Inform, Manage, A.I., Grow, Integrate, Network, Explore. For more info this is the workshop link: <https://eahil2025.umed.pl/>

### **20th International Conference on Open Repositories**

**June 15-18, Chicago, Illinois, USA**

The theme for the OR2025 conference is: Twenty Years of Progress, a Future of Possibilities. For more info: <https://or2025.openrepositories.org/>

### **5th IFLA Symposium on Artificial Intelligence**

**June 16-20, Pietermaritzburg, KwaZulu-Natal, South Africa**

The 5th IFLA Symposium on AI seeks to explore the latest advancements, challenges, and best practices in leveraging AI technologies within libraries and information services. More info at: <https://ailib.ukzn.ac.za/>

### **ALA 2025 Annual Conference & Exhibition**

**June 26–30, Philadelphia, Pennsylvania, USA**

More details at: <https://2025.alaannual.org/>

### **LIBER 54th Annual Conference**

**July 2-4, Lausanne, Switzerland**

The theme for this conference is “Engage, collaborate, innovate: libraries working to address global challenges”. More info at: <https://liberconference.eu/>

*Please feel free to contact me ([annarita.barbaro@iss.it](mailto:annarita.barbaro@iss.it)) if you have any further suggestion about initiatives or events you would like to promote*

### Editorial Board

**CHIEF EDITOR: Federica Napolitani Cheyne**  
 Scientific Communication Unit, Istituto Superiore di Sanità,  
 Viale Regina Elena 299, I-00161 Roma, Italy  
 • Tel: +39 06 4990 2945  
 • E-mail: federica.napolitani@iss.it

**Annarita Barbaro**  
 Servizio Conoscenza, Istituto Superiore di Sanità  
 Viale Regina Elena 299, I-00161 Roma, Italy  
 • Tel: +39 06 4990 6797  
 • E-mail: annarita.barbaro@iss.it

**Gerhard Bissels**  
 Balberstrasse 80 | 8038 Zürich, Switzerland  
 • Tel: +41 32 621 59 60  
 • E-mail: gerhard.bissels@posteo.ch

**Fiona Brown**  
 The Lady Smith of Kelvin Veterinary Library, Royal (Dick)  
 School of Veterinary Studies, University of Edinburgh, Easter  
 Bush, Midlothian  
 EH25 9RG, Scotland, UK  
 • Tel: +44 131 650 6176  
 • E-mail: F.Brown@ed.ac.uk

**Katri Larmo**  
 Terkko - Meilahti Campus Library, P. O. Box 61  
 (Haartmaninkatu 4) 00014 University of Helsinki, Finland  
 • Tel: +358 2941 26629  
 • E-mail: katri.larmo@helsinki.fi

**Leeni Lehtio**  
 Turku University Library, FI-20014 Turun yliopisto, Finland  
 • Tel: +358 29 450 2444/+358 50 564 2840  
 • E-mail: leeni.lehtio@utu.fi

**Maria-Inti Metzendorf**  
 Institute of General Practice, Medical Faculty, University of  
 Düsseldorf, Moorenstr. 5, 40225 Düsseldorf, Germany  
 • Tel: +49 211 81 04575  
 • E-mail: maria-inti.metzendorf@med.uni-duesseldorf.de

**David Ožura**  
 Strokovna knjižnica, Onkološki inštitut, Zaloška cesta 5,  
 1000 Ljubljana, Slovenia  
 • Tel: +386 1 587 93 73  
 • E-mail: dozura@onko-i.si

**Michelle Wake**  
 UCL School of Pharmacy, 29-39 Brunswick Square,  
 London WC1N 1AX, United Kingdom  
 • Tel: +44 (0)20 77535833  
 • E-mail: m.wake@ucl.ac.uk

**Rebecca Wojturska**  
 Library & University Collections, University of Edinburgh,  
 Old College, South Bridge,  
 Edinburgh EH8 9YL, United Kingdom  
 • E-mail: Rebecca.Wojturska@ed.ac.uk

Whilst the Editorial Board endeavours to obtain items of interest, the facts and opinions expressed in these are the responsibility of the authors concerned and do not necessarily reflect the policies and opinions of the Association.

#### Advertisements

To advertise in this journal, please contact [eahil-secr@lists.eahil.eu](mailto:eahil-secr@lists.eahil.eu)

#### Instructions to Authors

Instructions to Authors are available online at [www.eahil.eu](http://www.eahil.eu). For further information please contact Federica Napolitani, Chief Editor of JEAHIL [federica.napolitani@iss.it](mailto:federica.napolitani@iss.it)

Editorial layout and pagination: **De Vittoria srl**, Rome, Italy

### EAHIL Executive Board (2025-2028)

**President** **Francesca Gualtieri**  
 Rottapharm Biotech s.r.l., via Valosa di Sopra 9  
 20900 Monza, Italy  
 • Tel: +39 9066091  
 • E-mail: francesca.gualtieri@rottapharm-biotech.com

**Vice President** **Alicia Fátima Gómez Sánchez**  
 TU Wien Bibliothek  
 Resselgasse 4, A-1040 Wien, Austria  
 • Tel +43 1 58801-44101  
 • E-mail: alicia.gomez@tuwien.ac.at

**Deputy vice-President and Treasurer (co-opted)** **Aoife Lawton**  
 Health Service Executive Ireland  
 Dr. Steevens' Library, Dr. Steevens' Hospital,  
 Dublin 8, IRELAND.  
 • Tel: 0876831498  
 • E-mail: Aoife.lawton@hse.ie

**Co-opted Past President** **Maurella Della Seta**  
 formerly, Istituto Superiore di Sanità  
 Viale Regina Elena 299, I-00161 Roma, Italy  
 • E-mail: maurella.dellaseta@gmail.com

**Treasurer** **Marion Heymans**  
 Zuyderland Medical Center  
 Dr H. van der Hoffplein 1, 6162 BG  
 Sittard-Geleen | Henri Dunantstraat 56419  
 PC Heerlen, The Netherlands  
 • Tel: 0031 88 4596006  
 • Mob. 0031 6 13073056  
 • E-mail: m.heyman@zuyderland.nl

**Secretary** **Katri Larmo**  
 Terkko - Meilahti Campus Library, P. O. Box 61  
 Haartmaninkatu 4) 00014 University of  
 Helsinki, Finland  
 • Tel: +358 2941 26629  
 • E-mail: katri.larmo@helsinki.fi

**Scholarships and Sponsorship Officer** **Güssün GÜNEŞ**  
 Marmara University, Yerleşkesi 34722  
 Kadıköy - İstanbul, Türkiye  
 • Tel: 0216 777 00 00  
 • E-mail: gussun.gunes@marmara.edu.tr

**Systems Administrator (co-opted)** **Witold Kozakiewicz**  
 Information and Library Centre  
 Medical University of Lodz  
 Muszynskiego 2  
 90-151 Lodz, Poland  
 • Tel: +48 42 272 54 01  
 • E-mail: witold.kozakiewicz@umed.lodz.pl

**Communication Officer** **Mala K Mann**  
 Specialist Unit for Review Evidence (SURE)  
 Cardiff University  
 Neuadd Meirionnydd, Heath Park  
 Cardiff CF14 4YS, UK  
 • Tel: +44 (0) 29 20 687913  
 • E-mail: mannmk@cardiff.ac.uk

**Deputy Systems Admin. and Deputy Comm. Officer** **Valeria Scotti**  
 Fondazione IRCCS Policlinico San Matteo  
 Via Golgi 19, 27100 PAVIA  
 • Tel: +39 382-503561  
 • E-mail: v.scotti@smatteo.pv.it

**JEAHIL Editor** **Federica Napolitani Cheyne**  
 Scientific Communication Unit,  
 Istituto Superiore di Sanità  
 • Tel: +39 06 4990 2945  
 • E-mail: federica.napolitani@iss.it

IBAN NL08 ABNA 0530364697 - BIC ABNANL2A

© 2025 EAHIL. Some rights reserved

