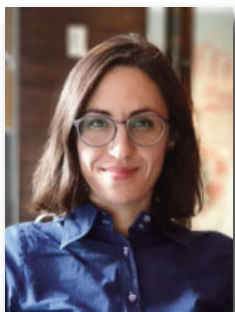


Navigating information resources for One Health, Global Health and Planetary Health



Maria-Inti Metzendorf

Member of JEAHIL Editorial Board
Heinrich-Heine-University Düsseldorf, Düsseldorf, Germany

Dear colleagues,

As medical librarians and health information professionals we are increasingly tasked with supporting research and decision-making in interdisciplinary fields. One Health, Global Health and Planetary Health represent interconnected approaches to population health that recognize the complex relationships between human, animal, and environmental well-being. This issue of our journal explores the information resources essential for navigating these broad domains, emphasizing the role of specialized databases and grey literature in capturing the full scope of available knowledge.

To lay the groundwork, my opening article provides key definitions, foundational literature, and an overview of major organizations engaged in these fields.

We are pleased to feature contributions from two major database producers whose work supports interdisciplinary health research. EBSCO Information Services, a leading US-based provider, presents two of its key databases that facilitate access to research relevant to these domains. CABI, a non-profit intergovernmental organization specializing in agricultural and environmental science, highlights its curated scientific knowledge and information solution that addresses the intersection of health, environment, and sustainability.

Beyond commercial and subscription-based databases, a wealth of vital information resides in grey literature – reports, policy documents, conference proceedings, and other materials not traditionally indexed in mainstream bibliographic databases. Our colleague Fiona Brown, from the University of Edinburgh, presents a curated list of complementary resources that extend our reach into governmental, non-profit, and institutional publications.

As information professionals, our ability to navigate these diverse sources directly impacts the quality and accessibility of research in One Health, Global Health and Planetary Health. I hope this issue provides valuable insights into the ever-evolving landscape of information resources and reinforces the essential role that librarians and information specialists play in advancing interdisciplinary health research for the well-being of all: people, animals, and the planet.

Wishing you a joyful and informative reading.